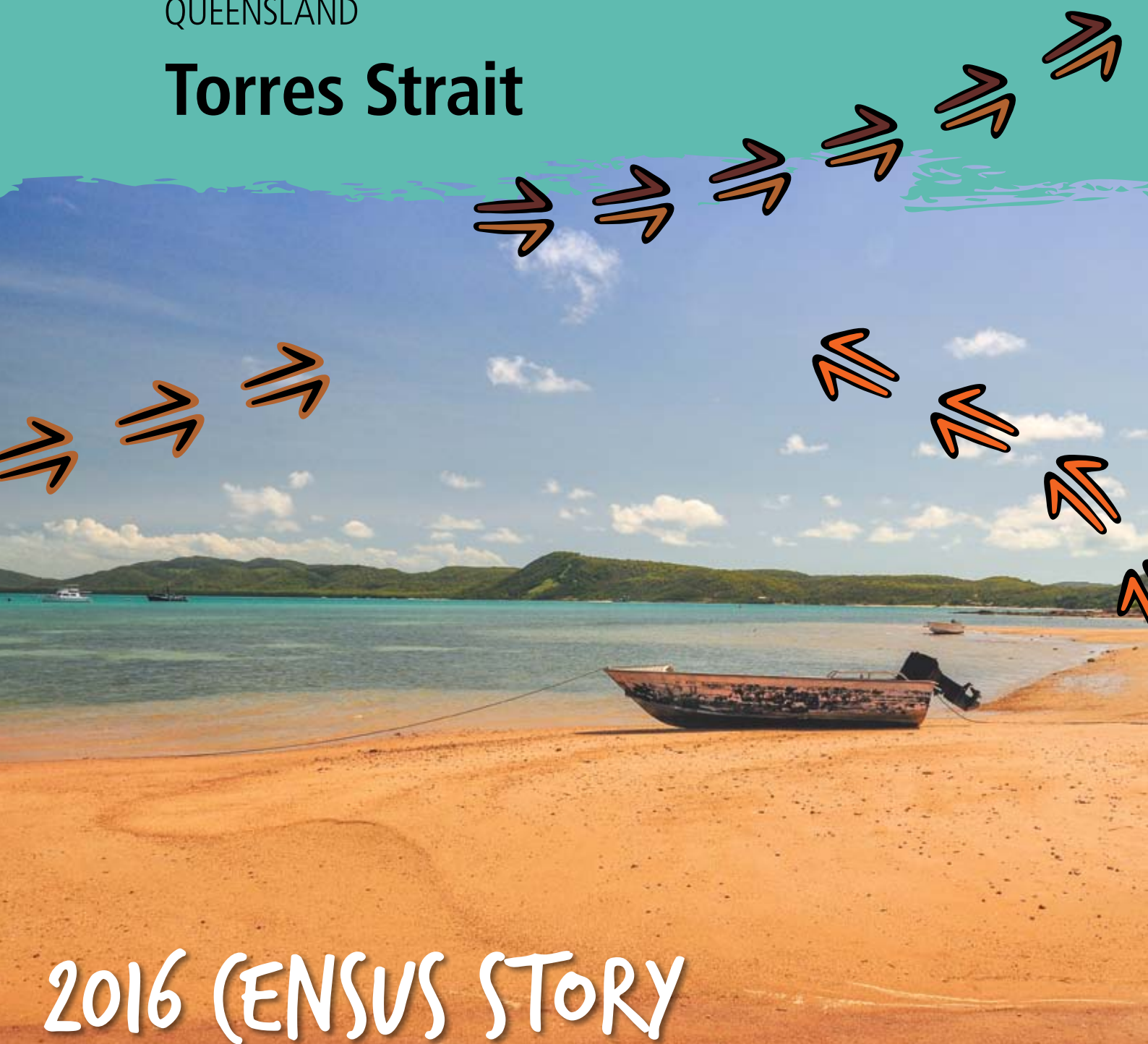


QUEENSLAND

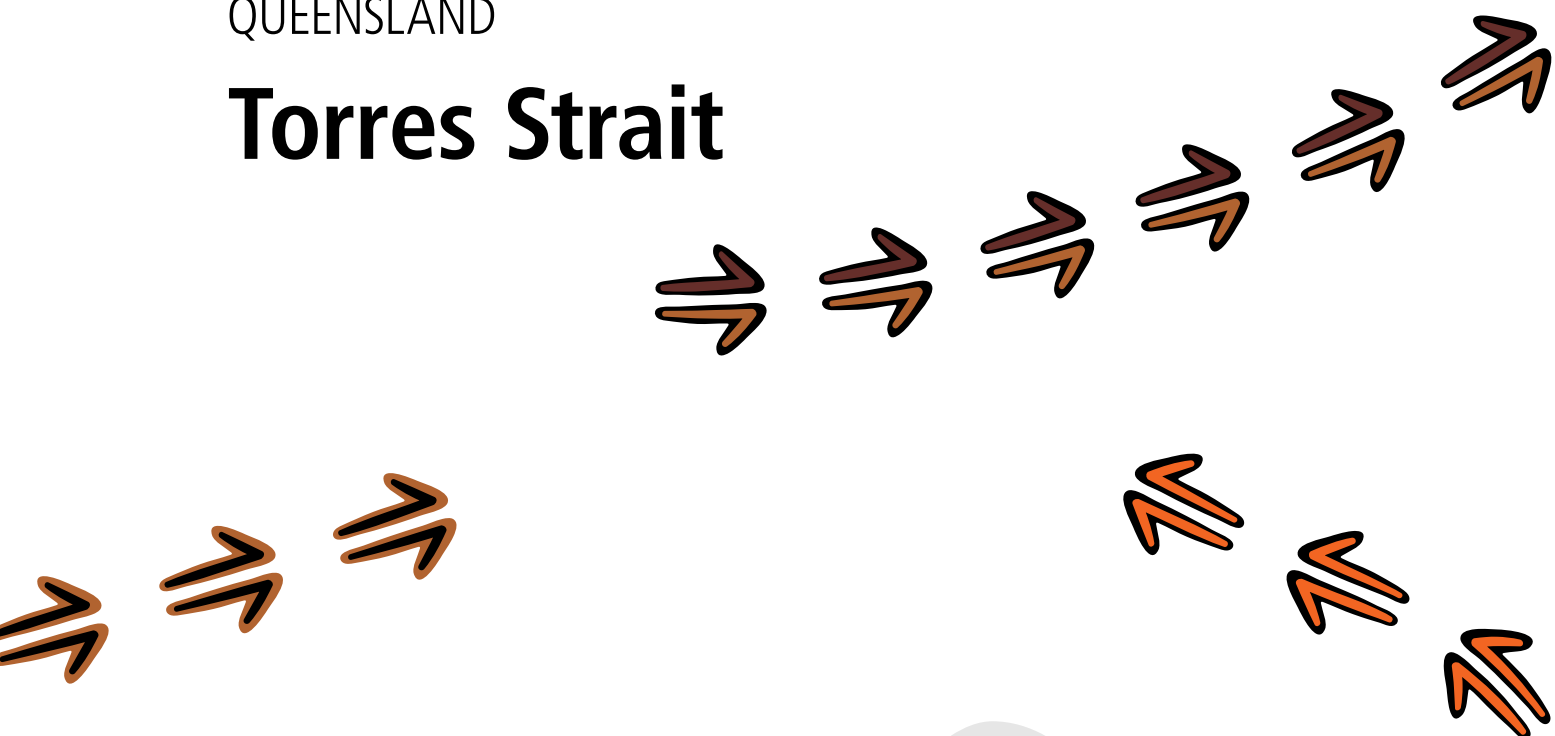
Torres Strait



2016 CENSUS STORY

QUEENSLAND

Torres Strait



2016 CENSUS STORY

Glossary

Caring for Children	People who spent time caring for a child/children (under 15 years) without pay in the two weeks prior to Census night.
Children	Are people aged under 15 years of age.
Completed Year 12	Includes people aged 15 years and over who are no longer attending primary or secondary school.
Families	Includes couple families with and without children, single parents, and other families.
Houses	Includes private dwellings, occupied and unoccupied. A dwelling is a structure which is intended to have people live in it, and which was habitable on Census night, for example houses, flats, caravans and humpies.
Language	Top Australian Indigenous language spoken at home.
People	Total population figures are based on place of 'usual residence' or where that person usually lives.
Students	Includes everyone who said they were attending a school, university or technical institution.
Weekly Income	Includes people aged 15 years and over and is the middle value (median) of total weekly personal income.
Working	Includes everyone who said they were working full-time or part-time, or were away from work. This does not include people involved in the Community Development Program (CDP).

Contents

Glossary	2
Artwork	4
The ABS says thanks	5
Queensland	7
Torres Strait Region	8
Badu Island	10
Boigu Island	12
Dauan Island	14
Erub (Darnley) Island	16
Hammond Island	18
Horn Island	20
Iama (Yam) Island	22
Kubin (Moa Island)	24
Mabuiag Island	26
Mer (Murray) Island	28
Muralag and Inner Islands	30
Poruma (Coconut) Island	32
Saibai Island	34
St Pauls (Moa Island)	36
Thursday Island - Port Kennedy	38
Thursday Island - TRAWQ	40
Ugar (Stephens) Island	42
Warraber Island	44
Yorke Island	46
Know more	48



Shaun Lee
Original concept by Shaun Lee

Artwork

The artwork in this story book was commissioned by the Centre of Excellence for Aboriginal and Torres Strait Islander Statistics to embody what the centre represents. The work incorporates Larrakia Artist Shaun Lee's (AKA Gwarkabah's) diverse heritage, through contemporary and traditional hand-created designs. Using spray-paint medium on hardwood, the work features and combines various traditional stories and symbols from local areas and across Australia. Together, the artwork tells the story of the Centre of Excellence and its people. The designs were digitalised by Dreamtime Creative.



Traditional stories and symbol break down



Star shape: National courage – representing navigation, called the 'Guiding Star'.

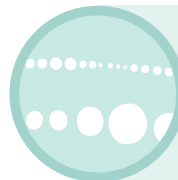
Core centre design: Black represents the earth and the soil; the pattern symbolises an 'ageless recognition' used through Northern Australia, and perhaps wider Australia. An 'ageless recognition' is the closest translation into English. It's derived from a number of terms that describe an instant identification of a particular established symbol of connection or linkage.



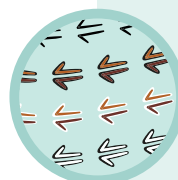
Message sticks: Representing unique messages; signifies that a story is being told and needs to be received.

Is a connection to and from Larrakia Country, and between other Indigenous cultures.

- **Top message stick:** Country and regions across Australia
- **Middle message stick:** Coming together and meeting
- **Bottom message stick:** Two half-moons facing inwards represents the people; and the two lines on either side identifies that the message is inclusive of both male and female.



Dots: Symbolises the link between people, organisations, States and Territories, representing the importance of strong linkage and communication. A dot in a dot in a dot: Traditional Larrakia design colours represent the artist's own diversity – his Northern Larrakia, Wardaman, Karrijarri heritage, and his acknowledgement of all of these people.



Kangaroo tracks: Acknowledge the journey and pathways that have been taken; and symbolises moving forward, as the kangaroo is known for not moving backwards.

Track colours: Represent diversity and the differences between people. The kangaroo is an iconic Australian animal, representing our uniqueness, and recognition Nationally.



Paperbark vessel: Carrying safely all the gathered information and knowledge

THE ABS SAYS THANKS



The Australian Bureau of Statistics would like to thank the Aboriginal and Torres Strait Islander communities who helped to make the 2016 Census a success.

Torres Strait, your numbers are in.

The results of our latest national Census reveal who we are, where we live, what we do, and where we're headed.

The information we've gathered will inform planning and decision-making for our future, like where we build schools, roads and hospitals. Census data helps us decide where we need funding and services across every community in Australia – this means your community, too!

So here is the story for Torres Strait – a living biography updated every five years.

Future surveys

The ABS also has other surveys. We thank you in advance for your help in completing these. They may include questions about your health, employment or other details. You can see how this information helps your community at www.abs.gov.au/participant-info.



Photos by the Australian Bureau of Statistics, taken from the Jabiru township.

Australia



23.4
million

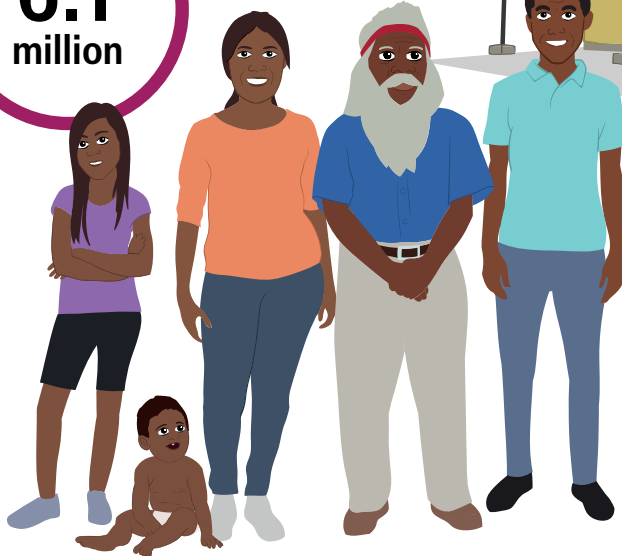
People

649 168

Aboriginal and/or
Torres Strait
Islander people

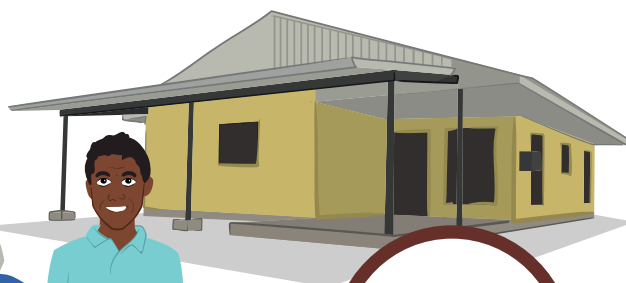
FAMILIES

6.1
million



9.9
million

HOUSES



11.9 million
Females



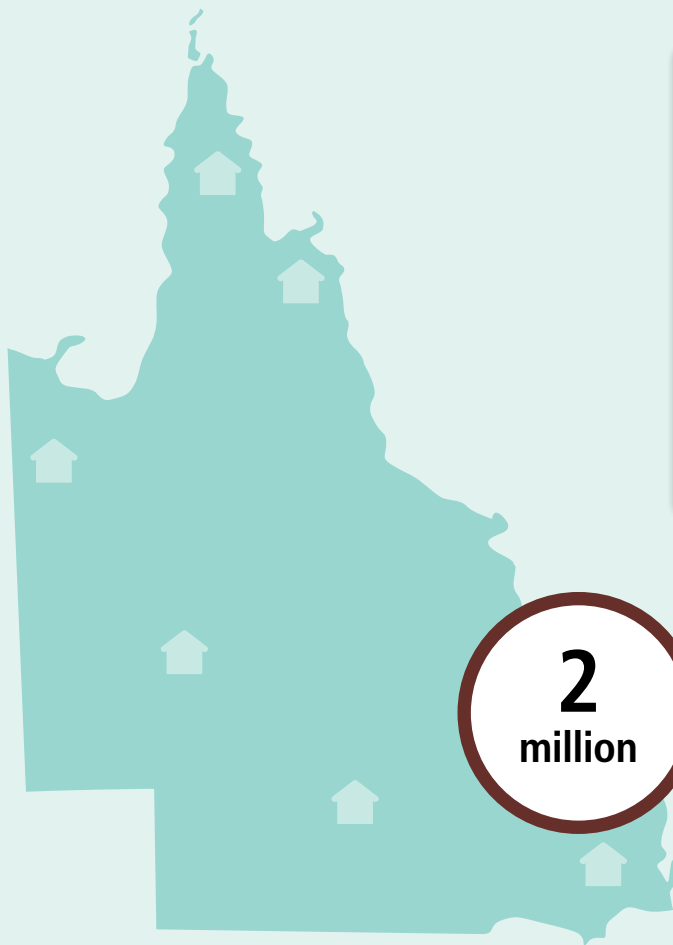
11.5 million
Males



4.4 million
Children



Queensland



4.7
million

People

186 484

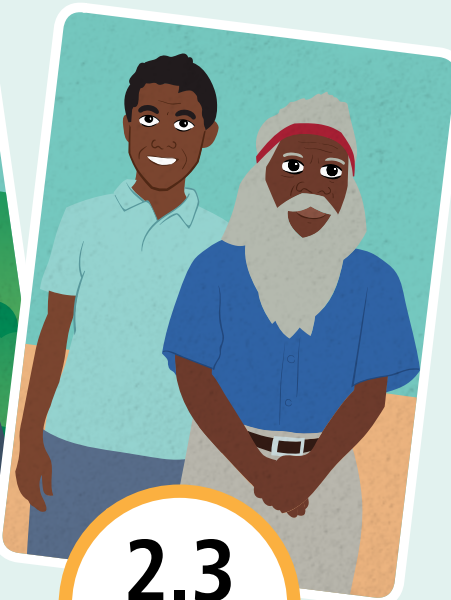
Aboriginal and/or
Torres Strait
Islander people

2
million

HOUSES

2.4
million

FEMALES



2.3
million

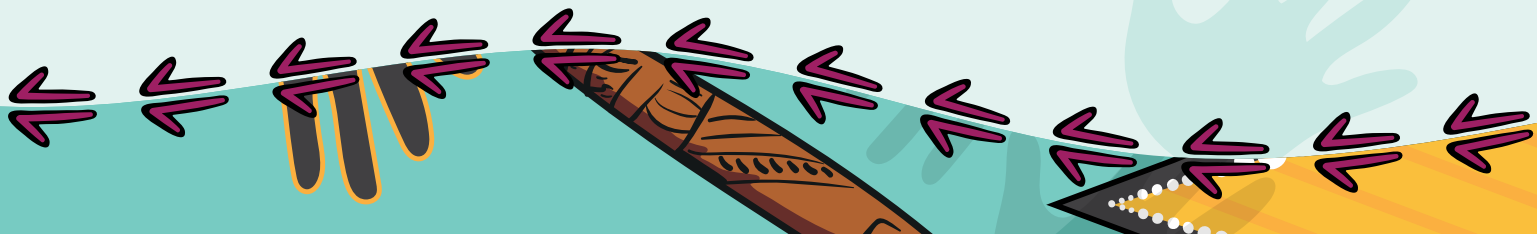
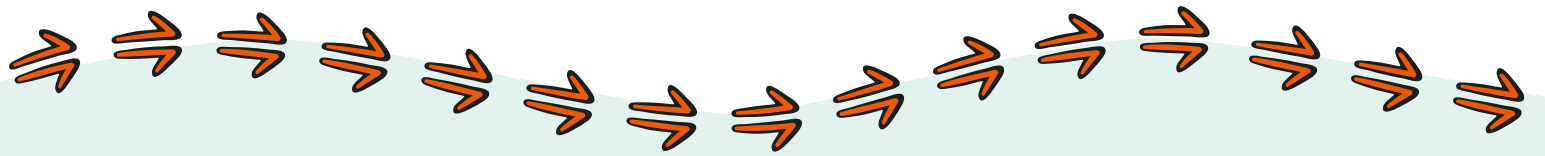
MALES

912 699

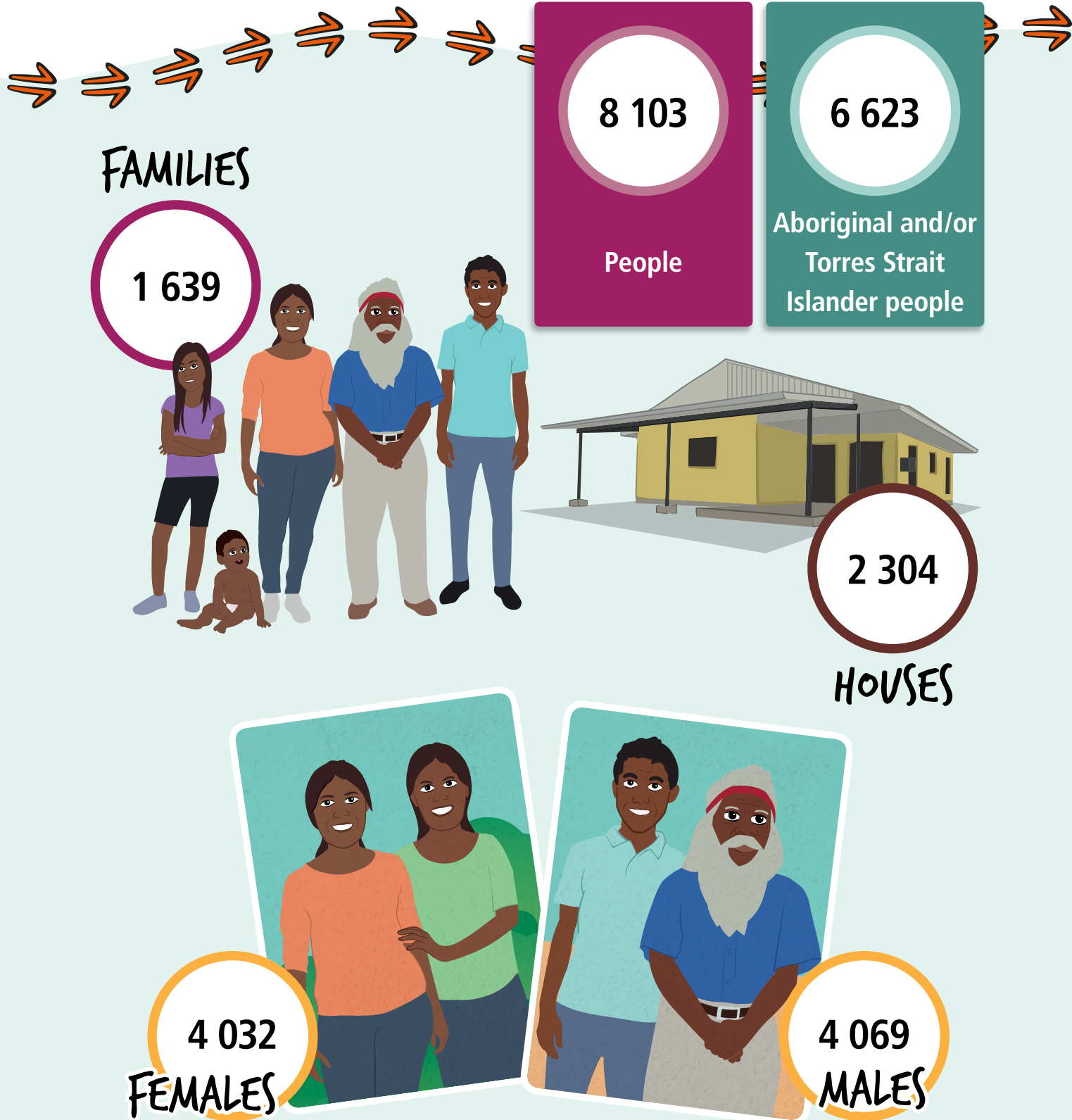
(CHILDREN



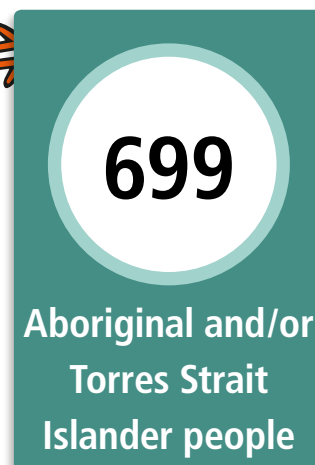
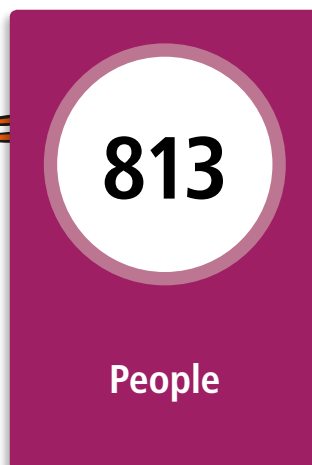
Torres Strait Region



Torres Strait Region

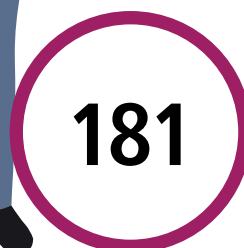


Badu Island

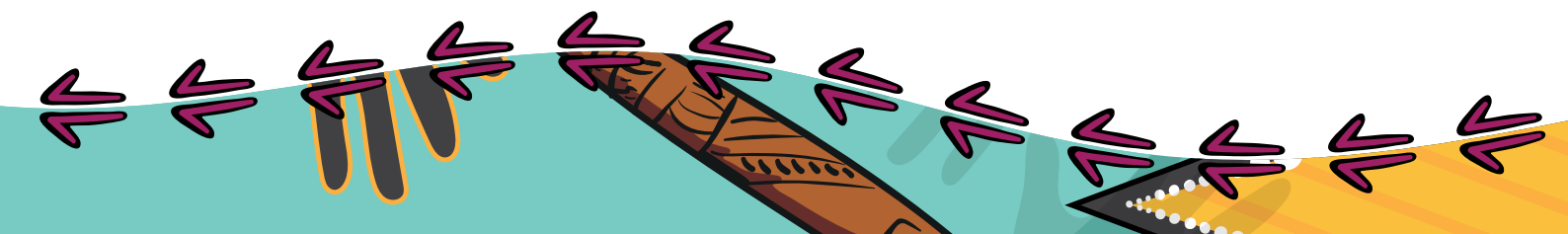


LANGUAGE SPOKEN
Yumplatok (Torres
Strait Creole)

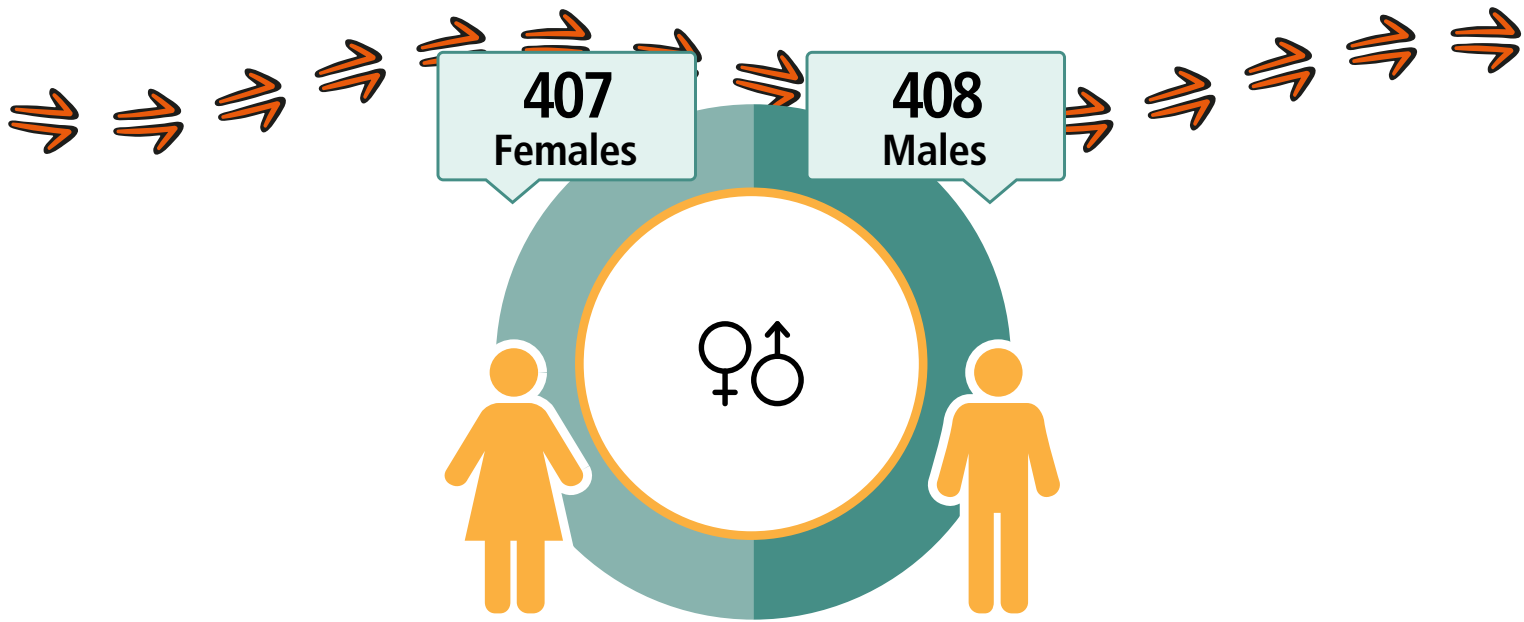
HOUSES



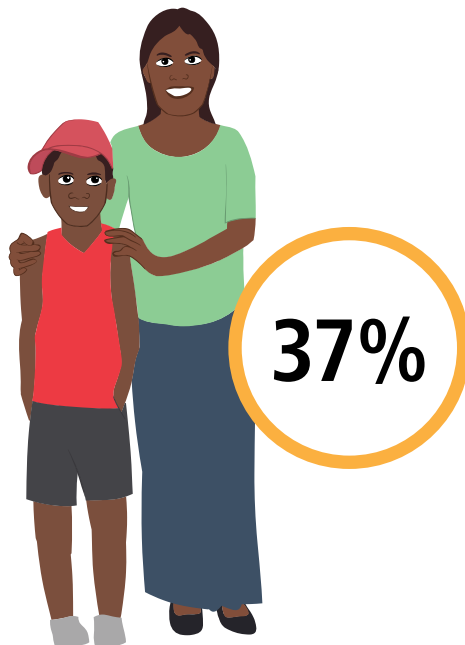
FAMILIES



Badu Island



CARED FOR CHILDREN



181
Working



\$365
Weekly Income



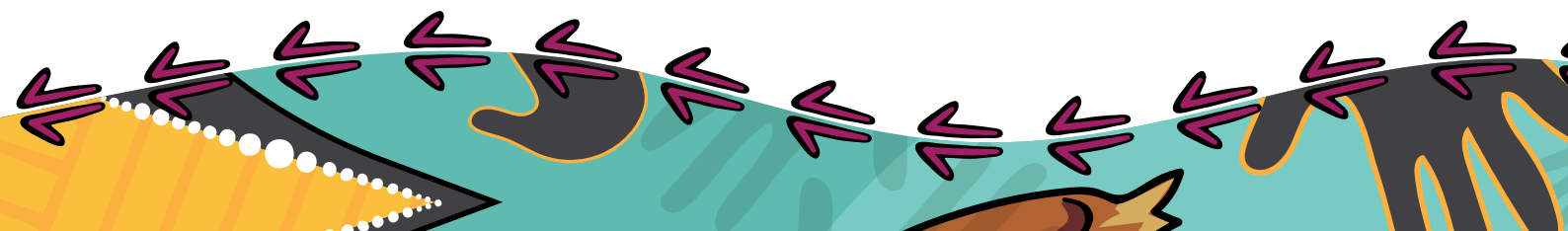
265
Students



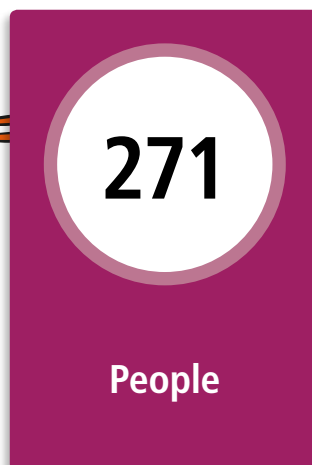
213
Completed
Year 12



Geography: Badu Island ILOC

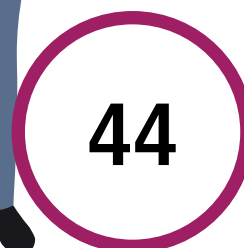
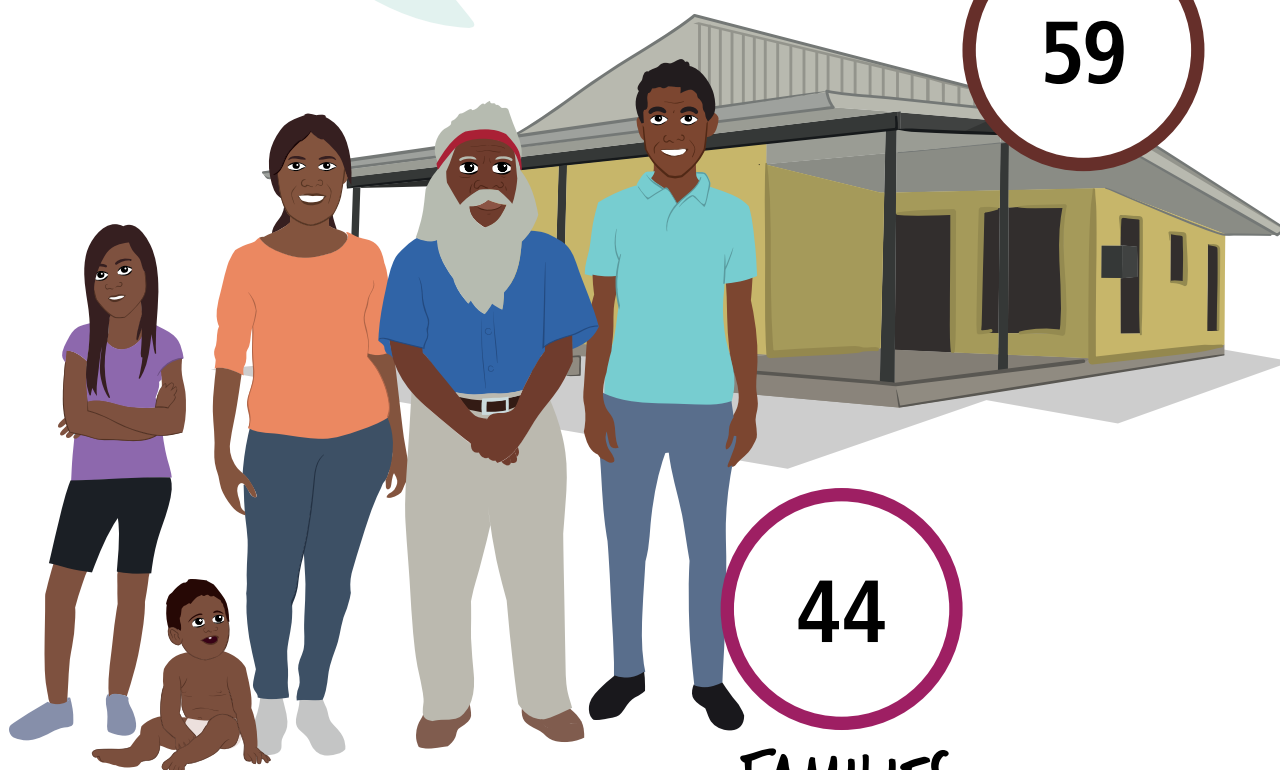
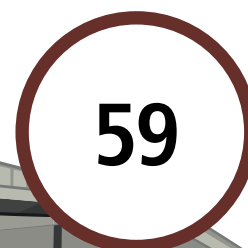


Boigu Island

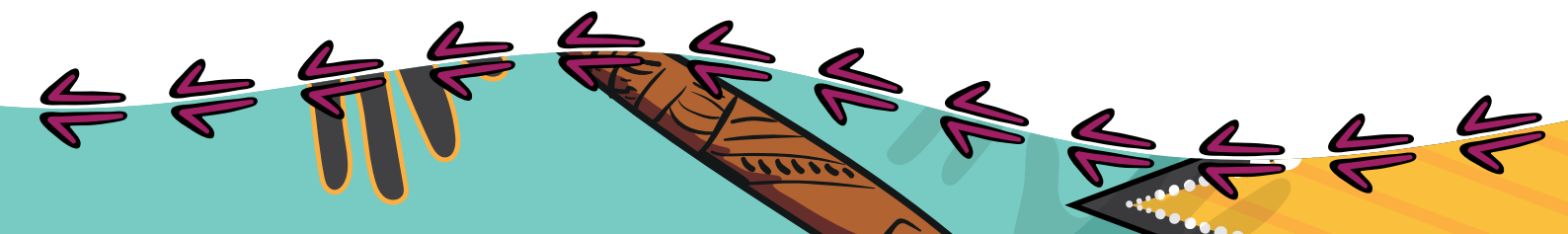


LANGUAGE SPOKEN
Kalaw Kawaw Ya/
Kalaw Ya

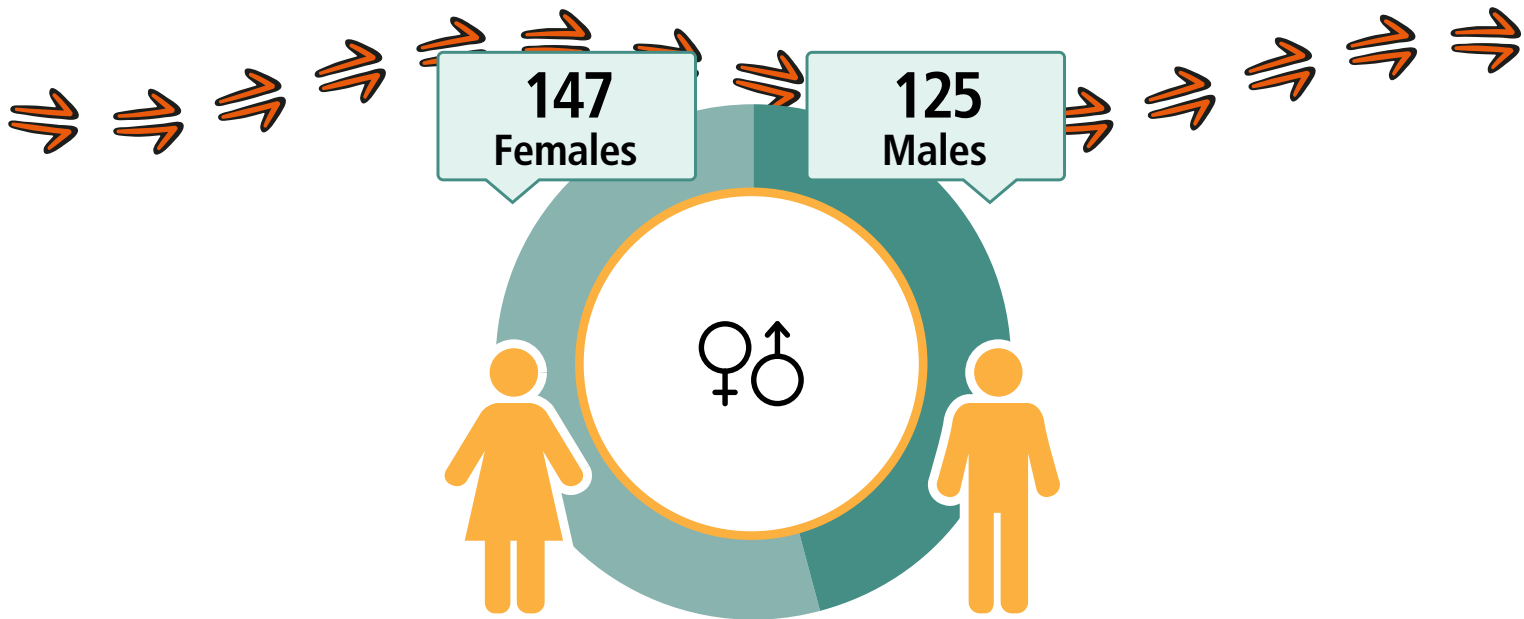
HOUSES



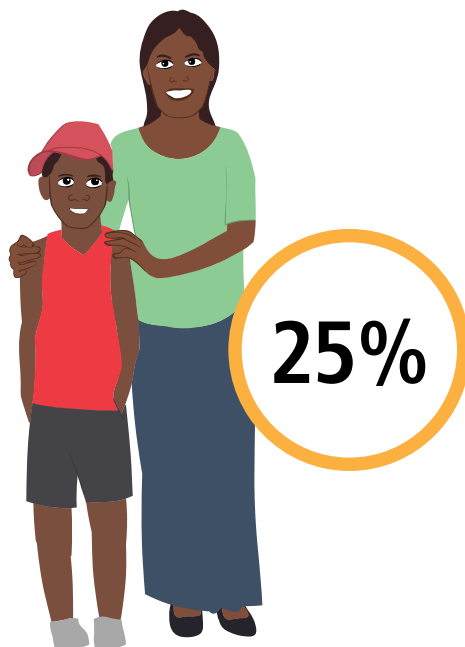
FAMILIES



Boigu Island



CARED FOR (CHILDREN



44
Working



\$278
Weekly Income



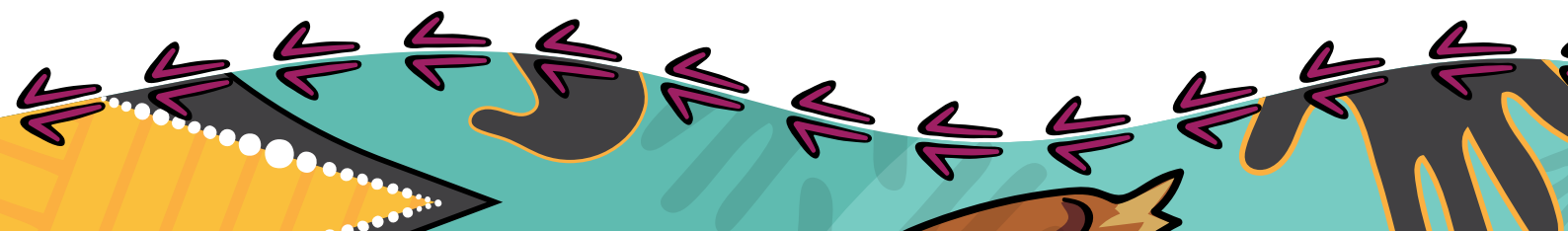
125
Students



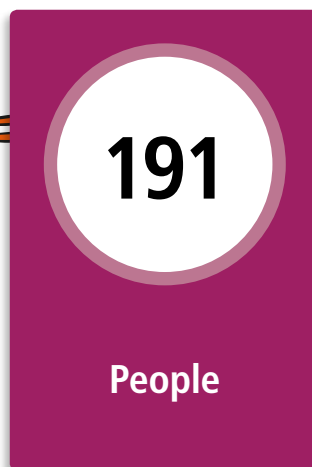
63
Completed
Year 12



Geography: Boigu Island ILOC

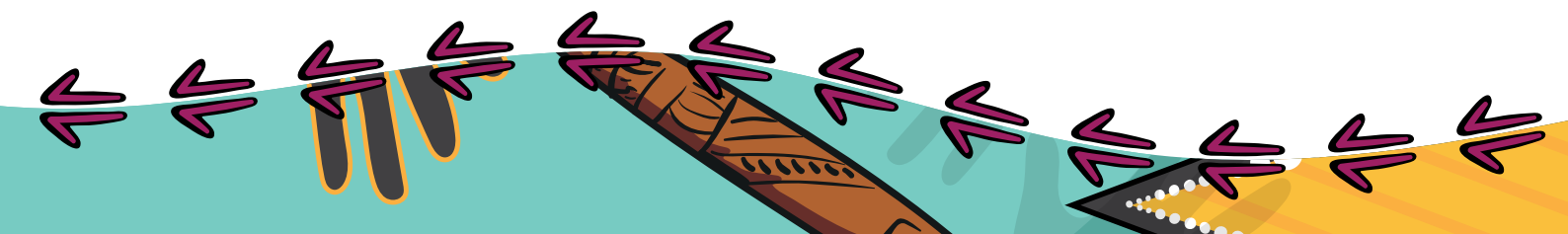
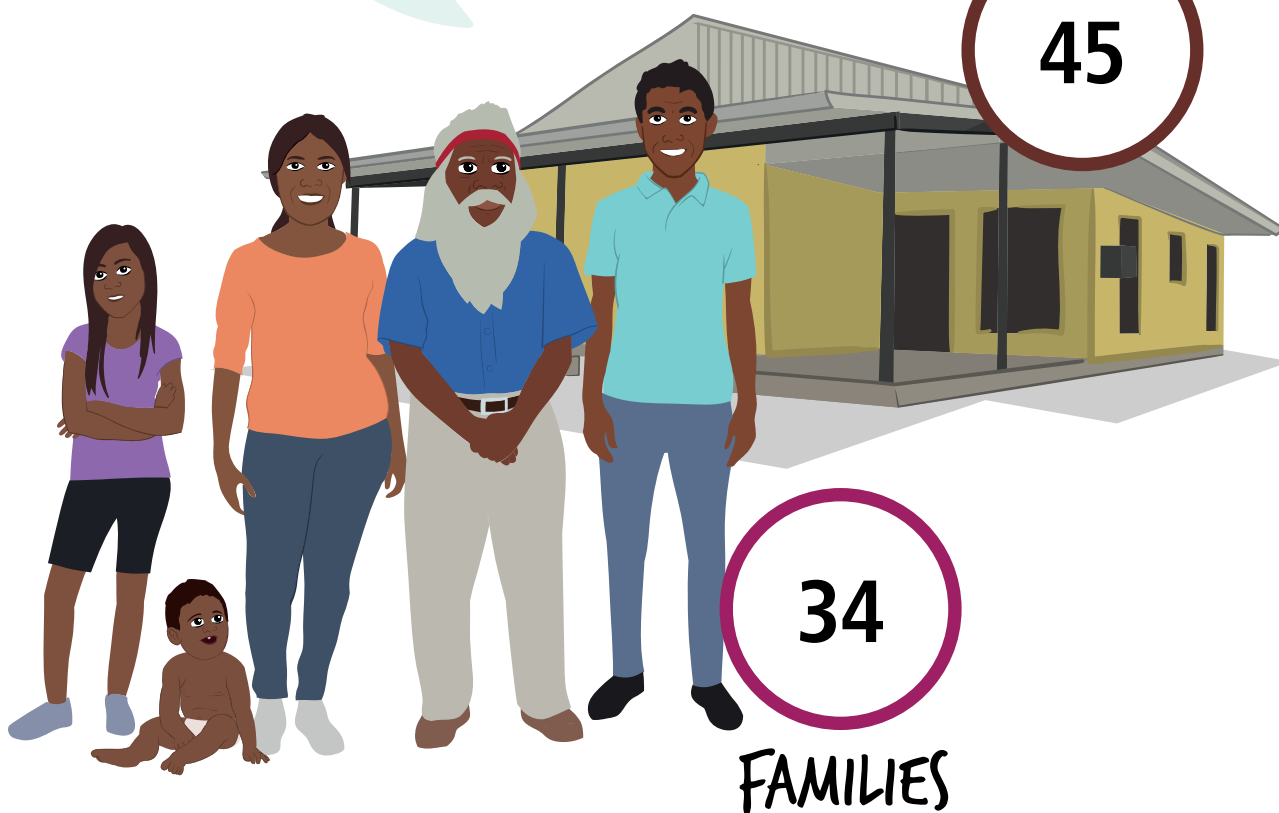
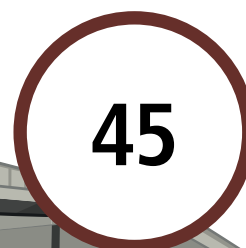


Dauan Island

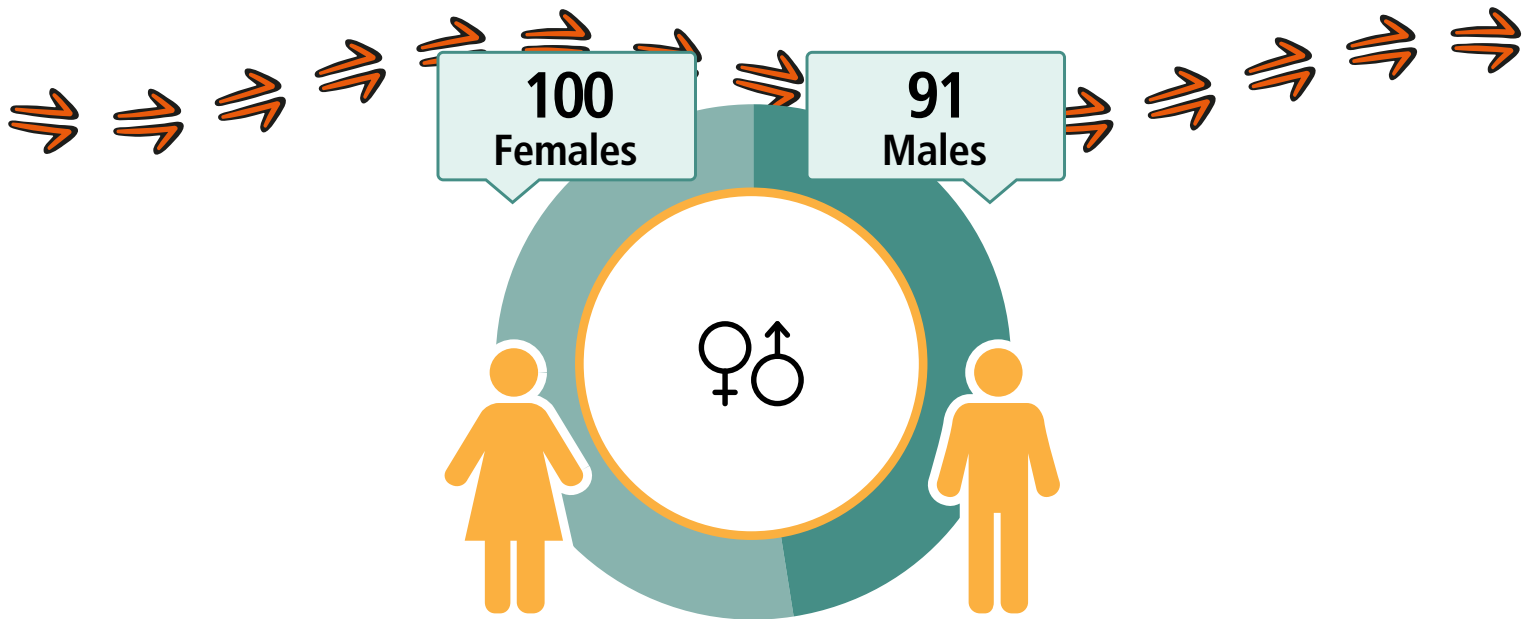


LANGUAGE SPOKEN
Kalaw Kawaw Ya/
Kalaw Ya

HOUSES



Dauan Island



CARED FOR CHILDREN



39%

40
Working



\$541
Weekly Income



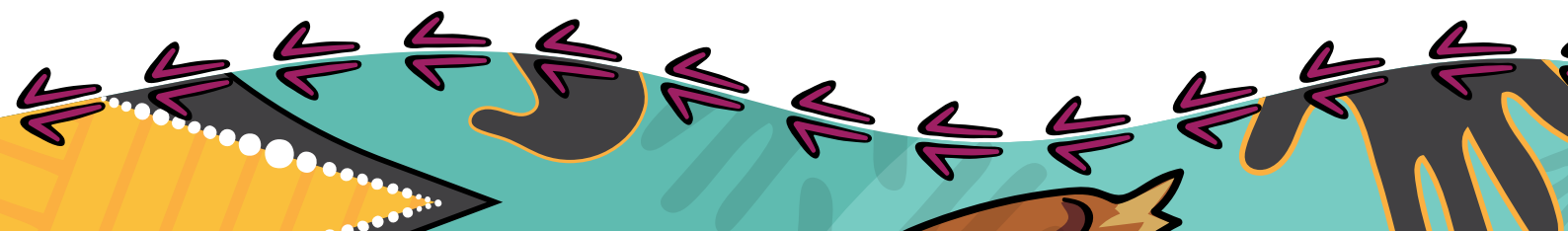
83
Students



48
Completed
Year 12



Geography: Dauan Island ILOC



Erub (Darnley) Island

LANGUAGE SPOKEN

Yumplatok (Torres Strait Creole)

328

People

313

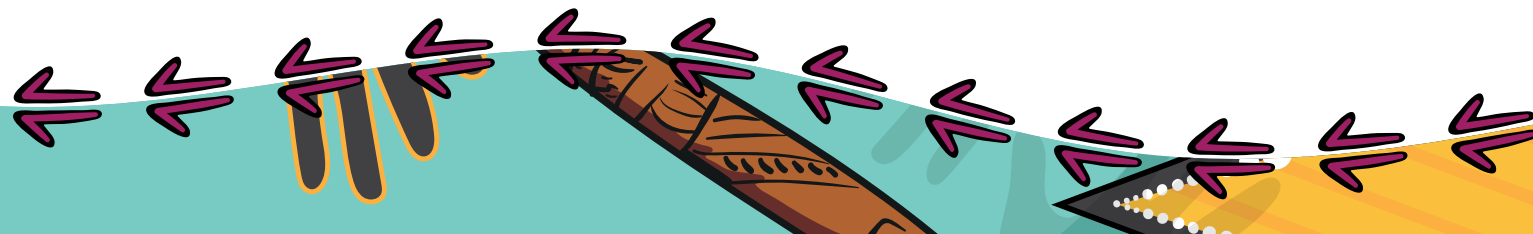
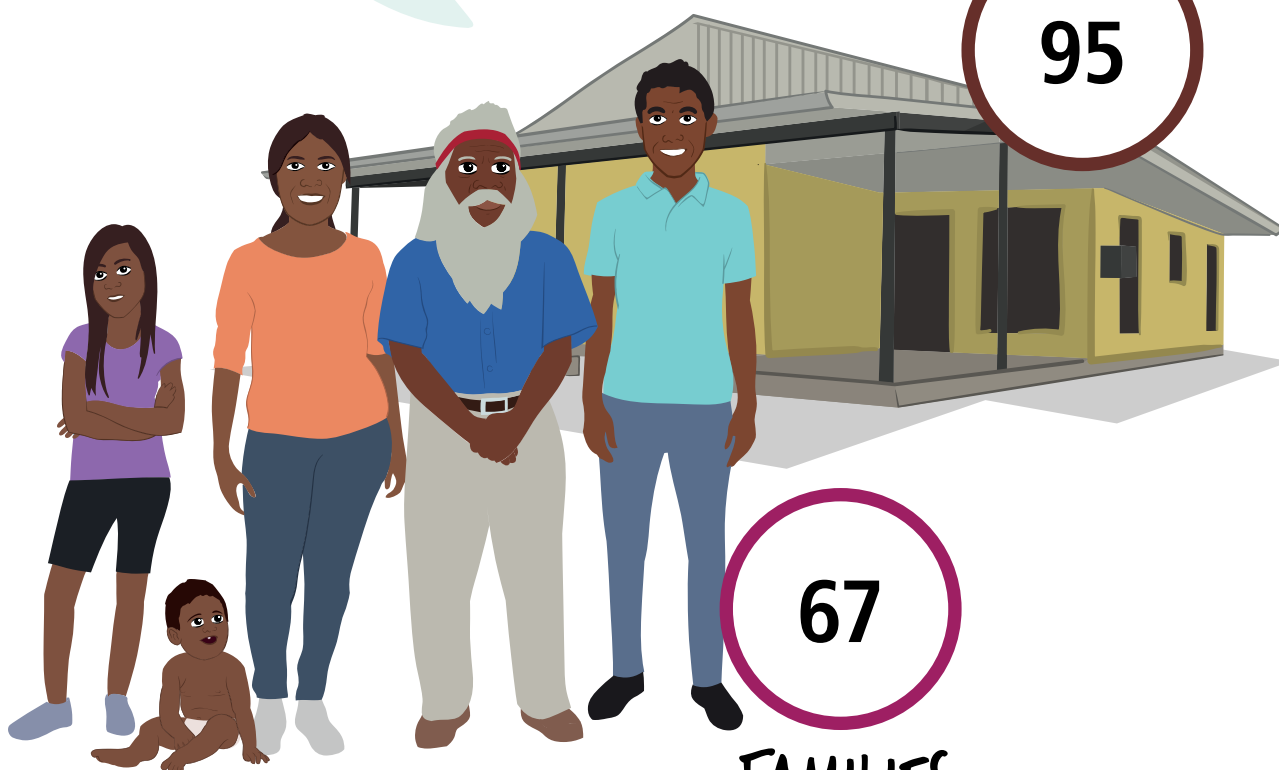
Aboriginal and/or
Torres Strait
Islander people

HOUSES

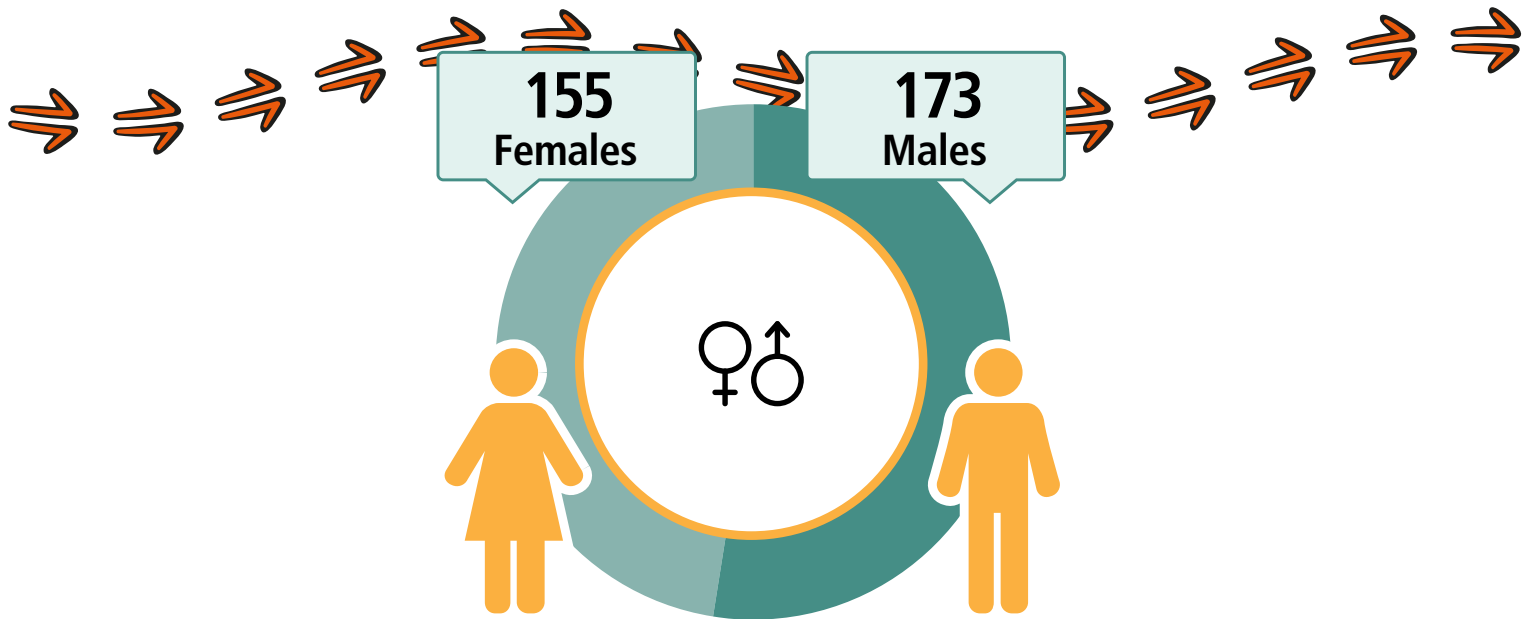
95

67

FAMILIES



Erub (Darnley) Island



CARED FOR CHILDREN



26%

69
Working



\$357
Weekly Income



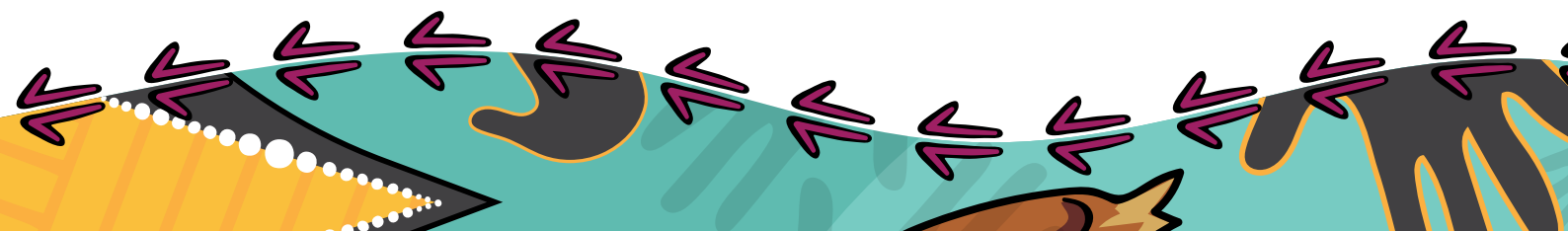
114
Students



96
Completed
Year 12



Geography: Erub (Darnley) Island ILOC



Hammond Island

LANGUAGE SPOKEN

Yumplatok (Torres Strait Creole)

268

People

246

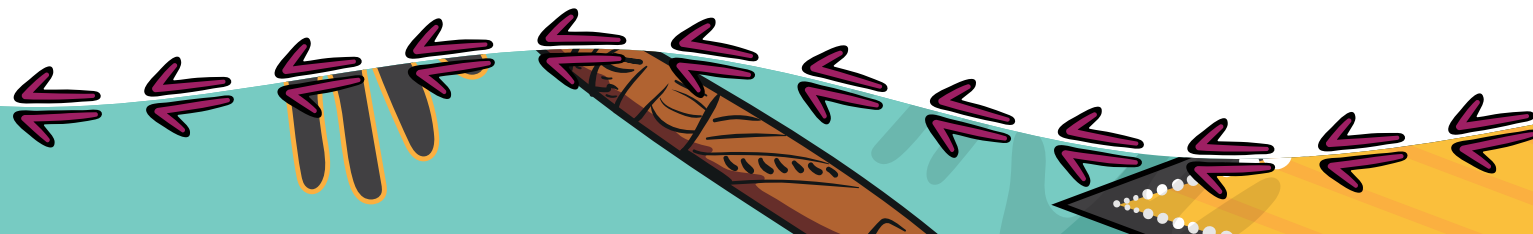
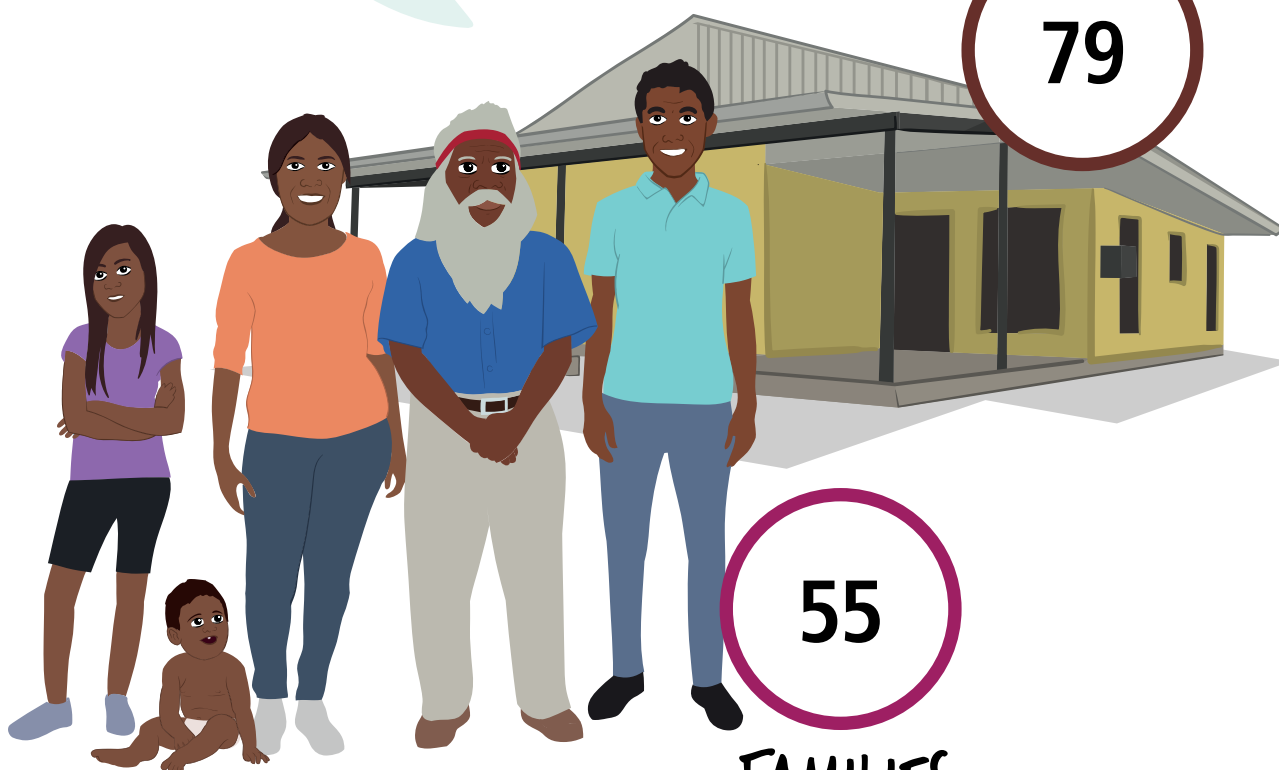
Aboriginal and/or
Torres Strait
Islander people

HOUSES

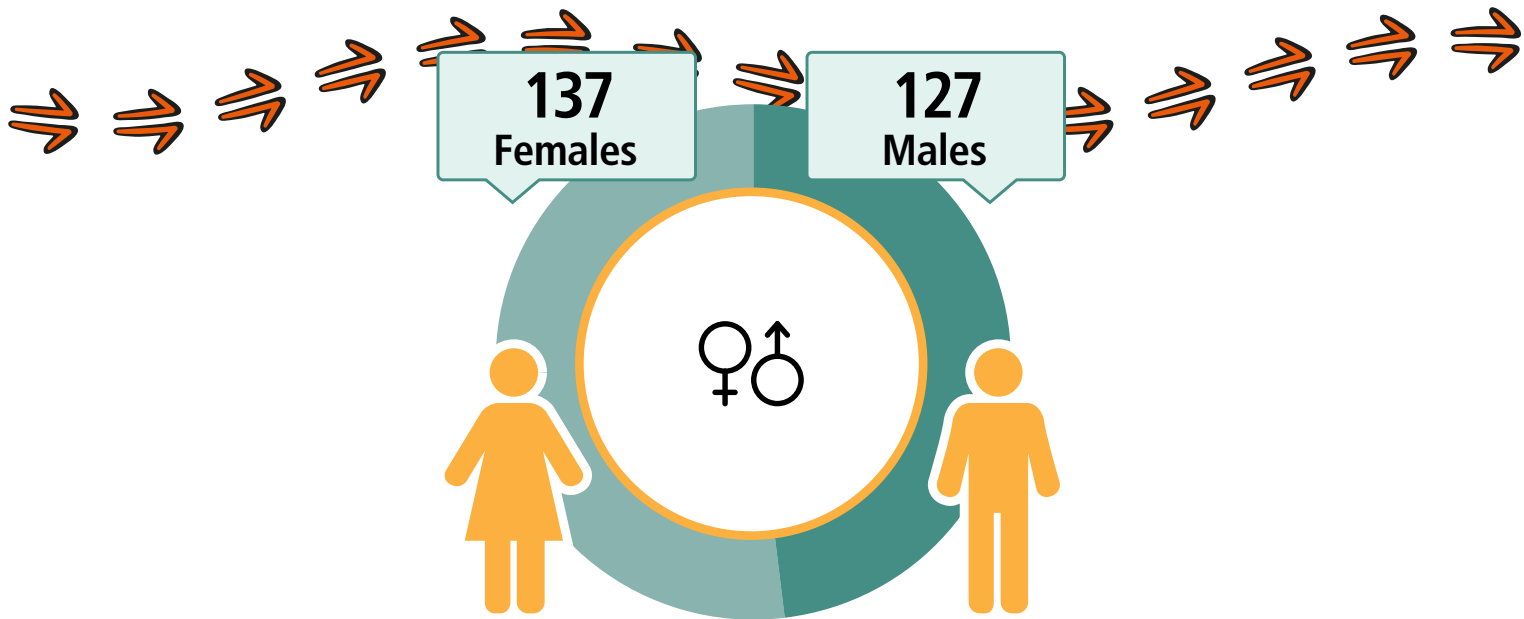
79

55

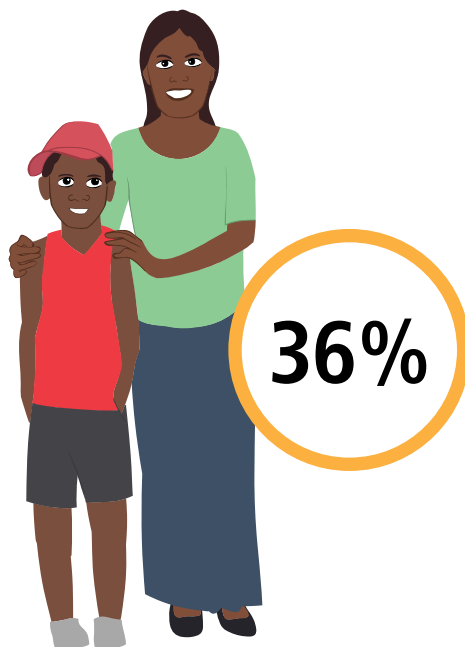
FAMILIES



Hammond Island



CARED FOR CHILDREN



73
Working



\$435
Weekly Income



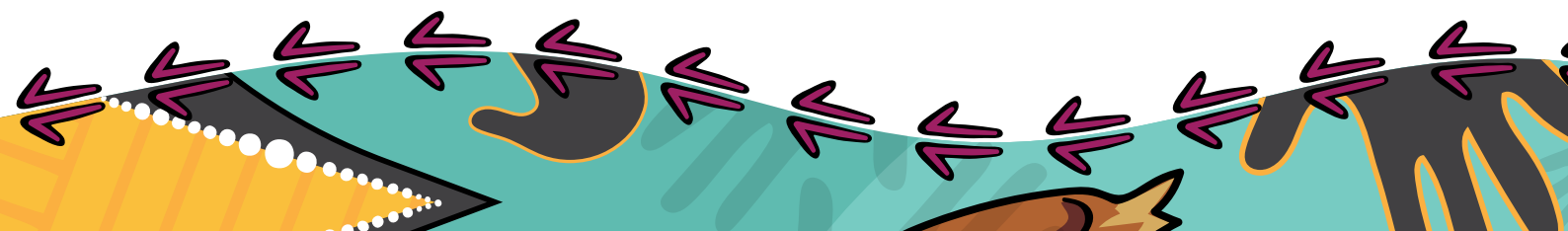
91
Students



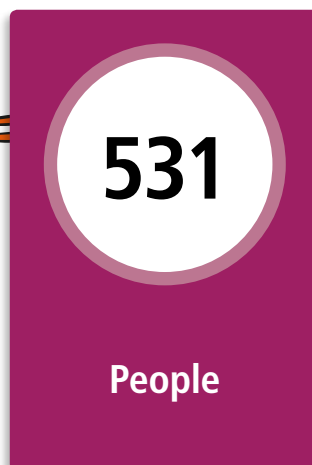
87
Completed
Year 12



Geography: Hammond Island ILOC

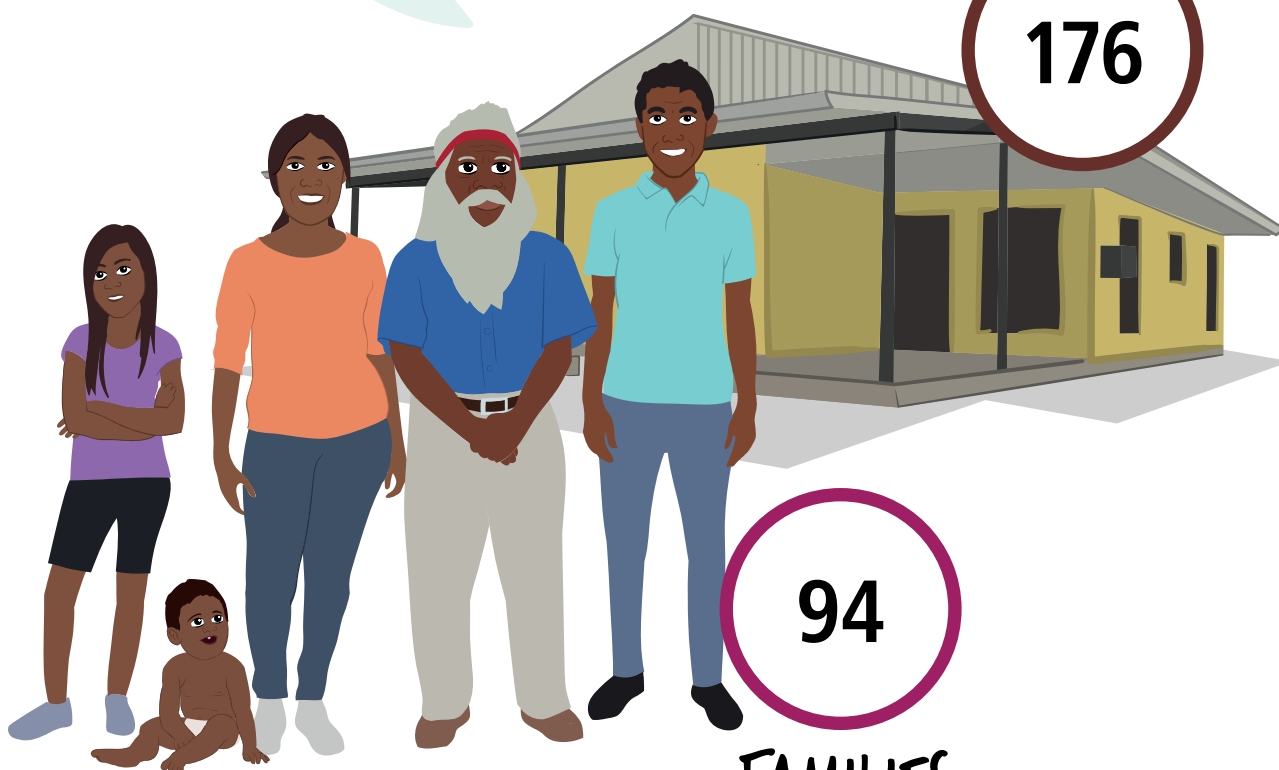
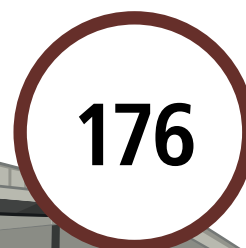


Horn Island

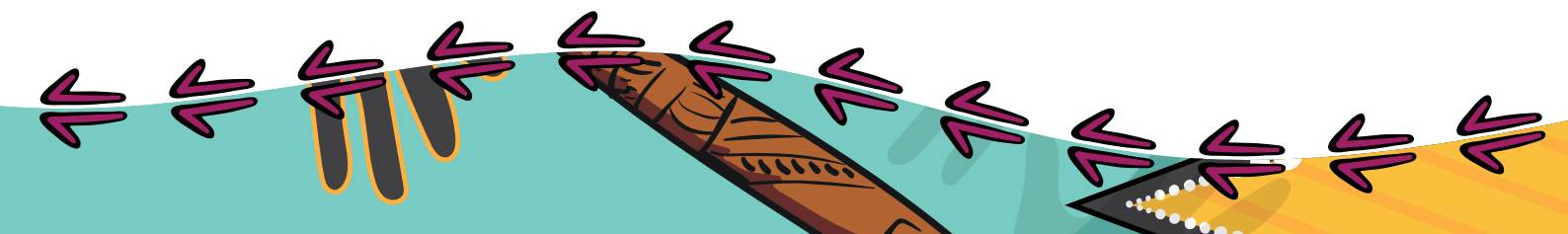


LANGUAGE SPOKEN
Yumplatok (Torres
Strait Creole)

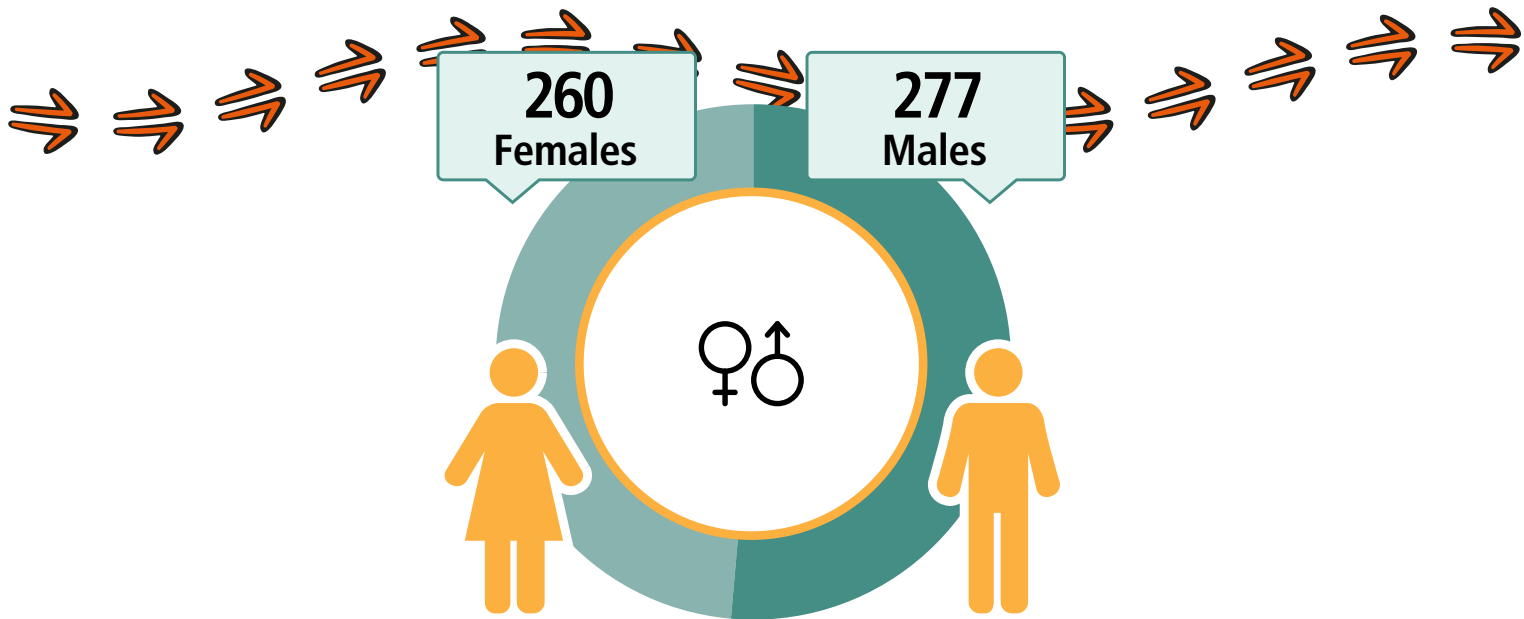
HOUSES



FAMILIES



Horn Island



CARED FOR CHILDREN



23%

196
Working



\$554
Weekly Income



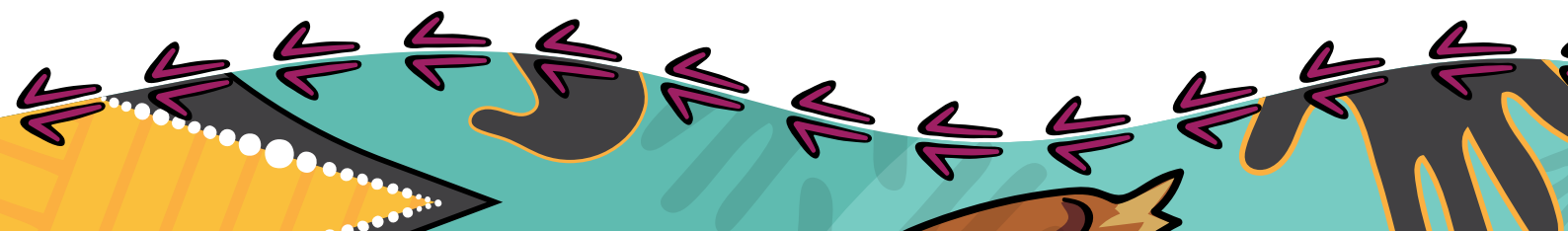
207
Students



160
Completed
Year 12



Geography: Horn Island ILOC



Iama (Yam) Island

LANGUAGE SPOKEN
Yumplatok (Torres Strait Creole)

319

People

302

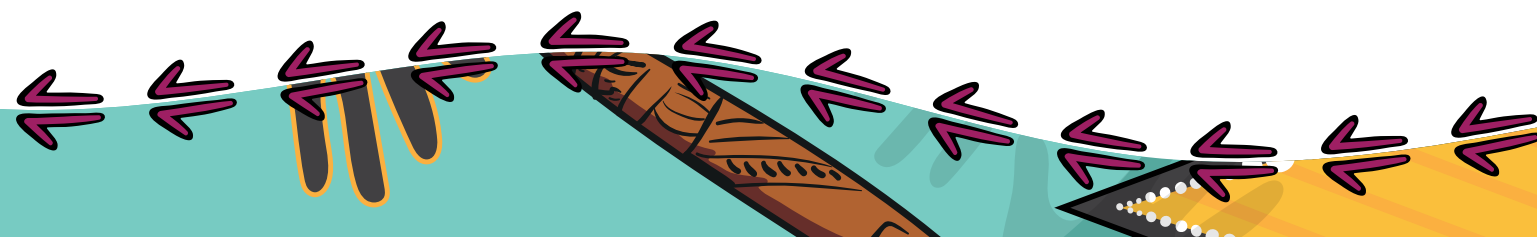
Aboriginal and/or
Torres Strait
Islander people

HOUSES

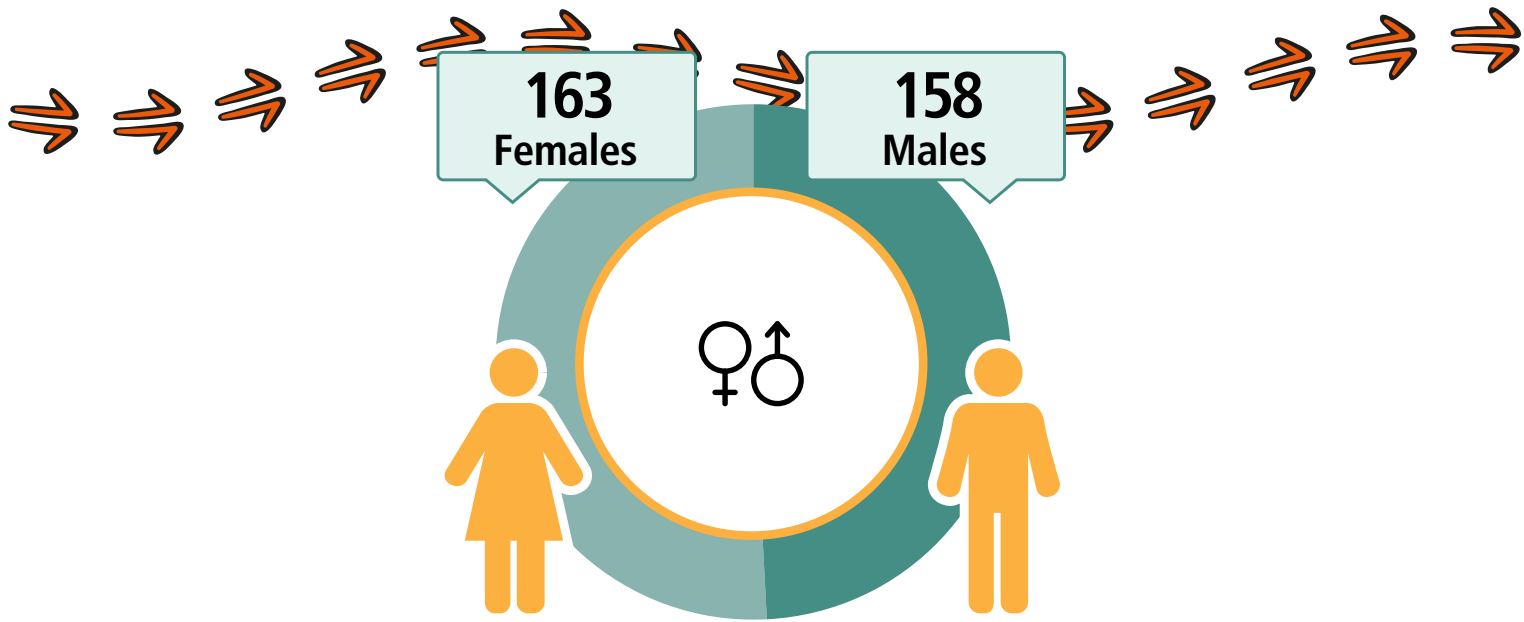
78

71

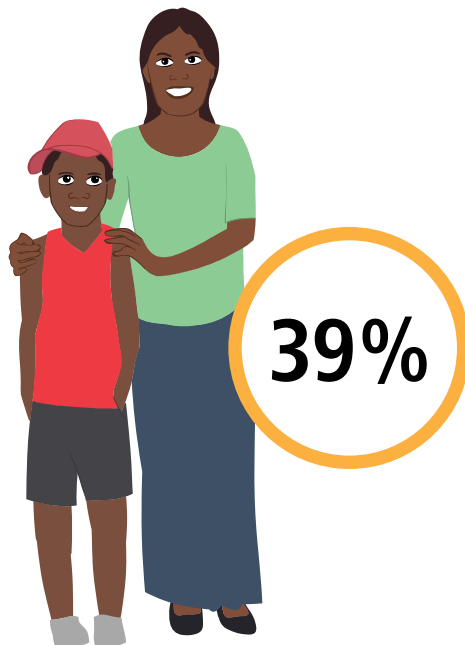
FAMILIES



Iama (Yam) Island



CARED FOR CHILDREN



57
Working



\$365
Weekly Income



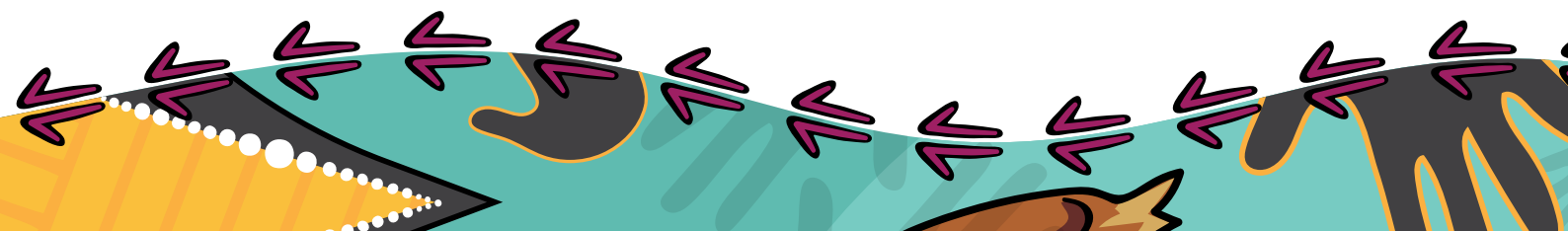
109
Students



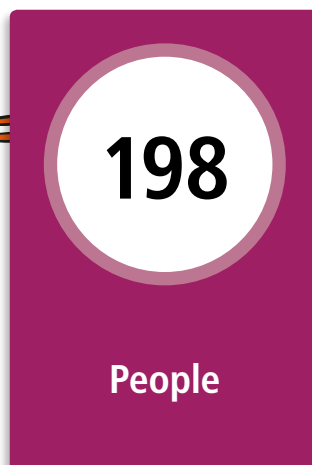
106
Completed
Year 12



Geography: Iama (Yam) Island ILOC

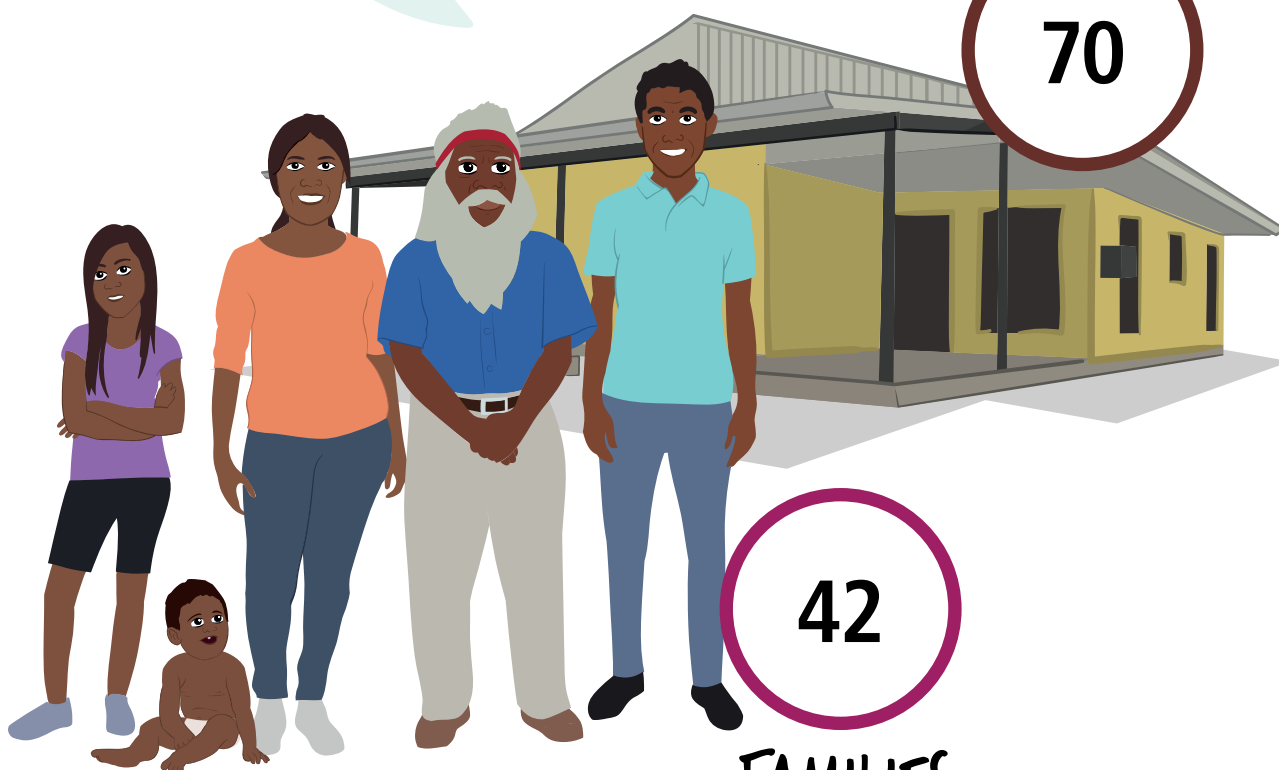
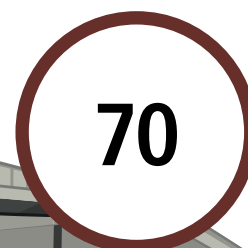


Kubin (Moa Island)

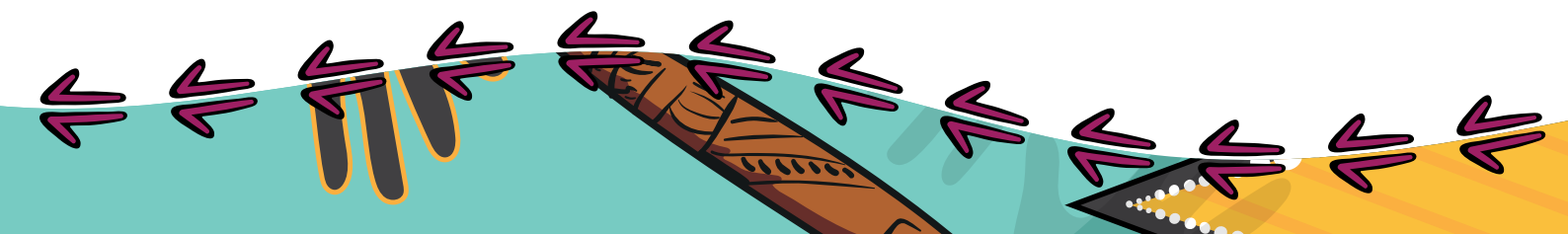


LANGUAGE SPOKEN
Yumplatok (Torres
Strait Creole)

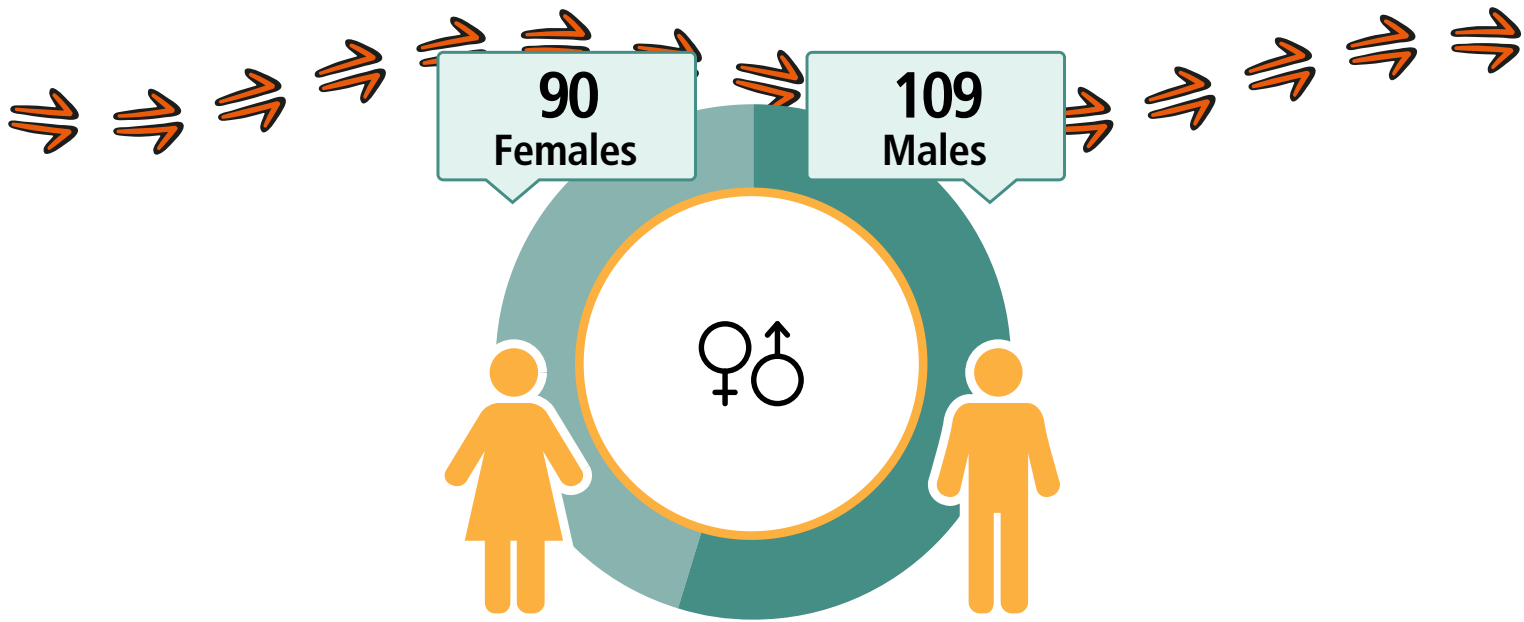
HOUSES



FAMILIES



Kubin (Moa Island)



CARED FOR CHILDREN



33%

46
Working



\$385
Weekly Income



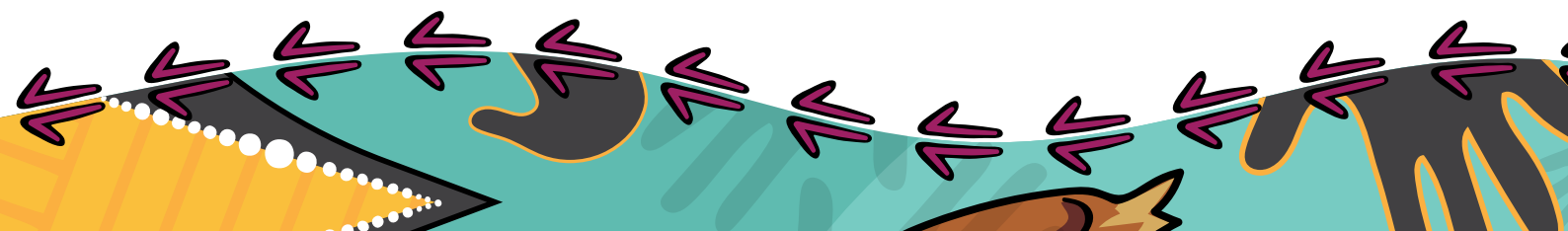
65
Students



63
Completed
Year 12



Geography: Kubin (Moa Island) ILOC



Mabuiag Island

LANGUAGE SPOKEN
Yumplatok (Torres Strait Creole)

210

People

208

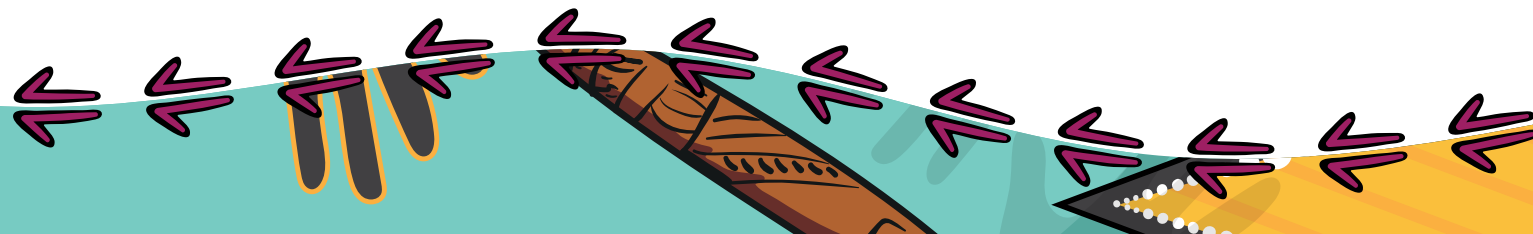
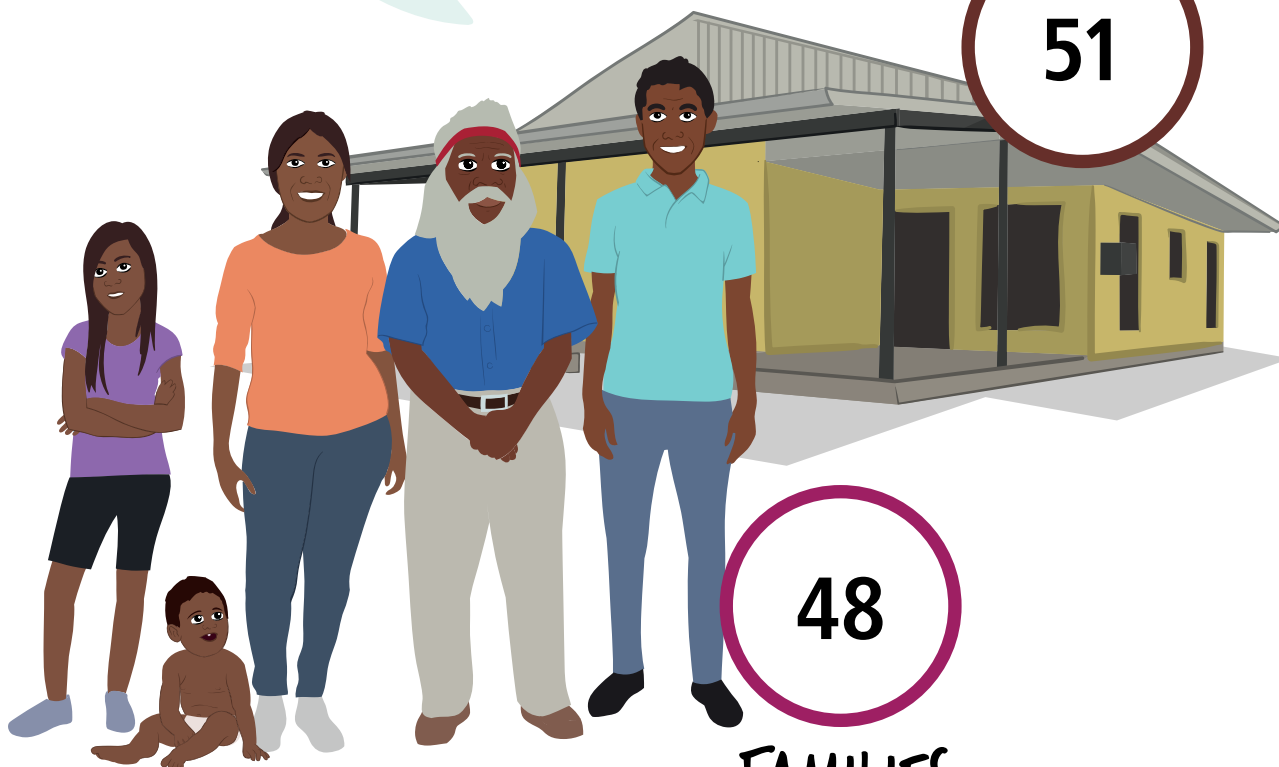
Aboriginal and/or
Torres Strait
Islander people

HOUSES

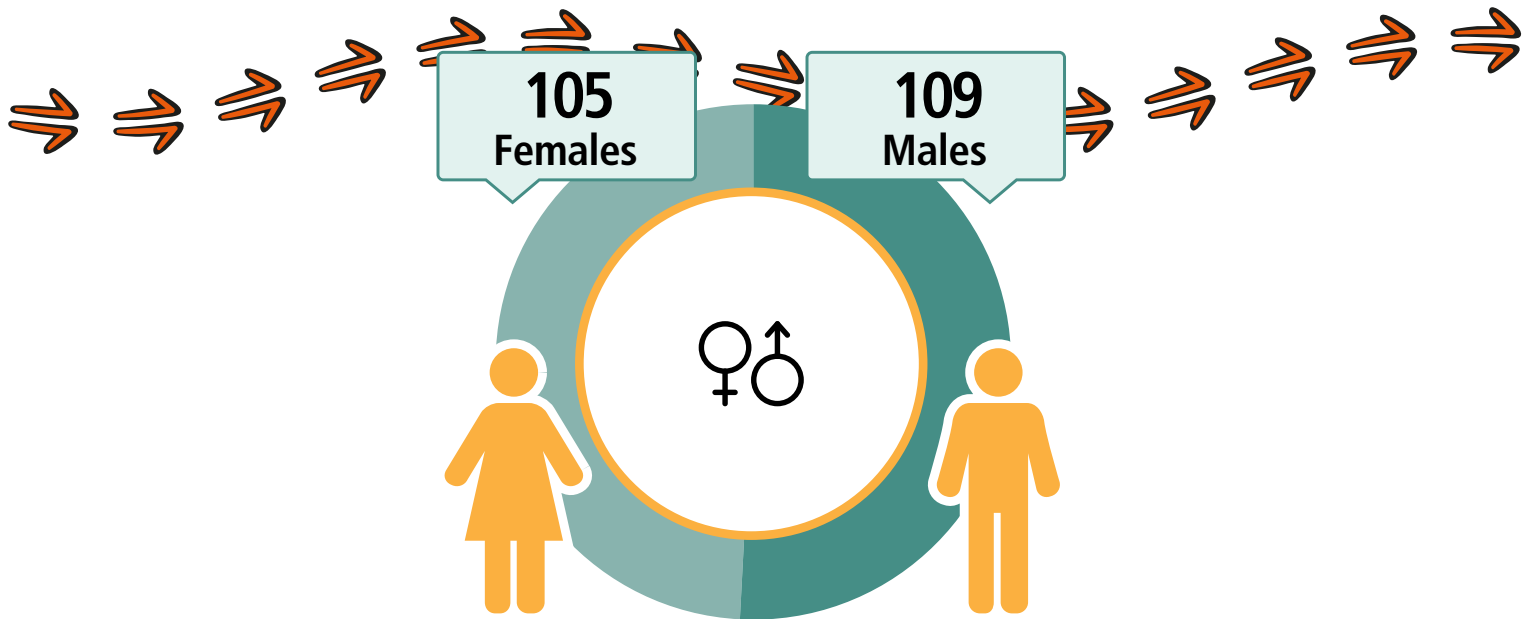
51

48

FAMILIES



Mabuiag Island



CARED FOR CHILDREN



42%

47
Working



\$387
Weekly Income



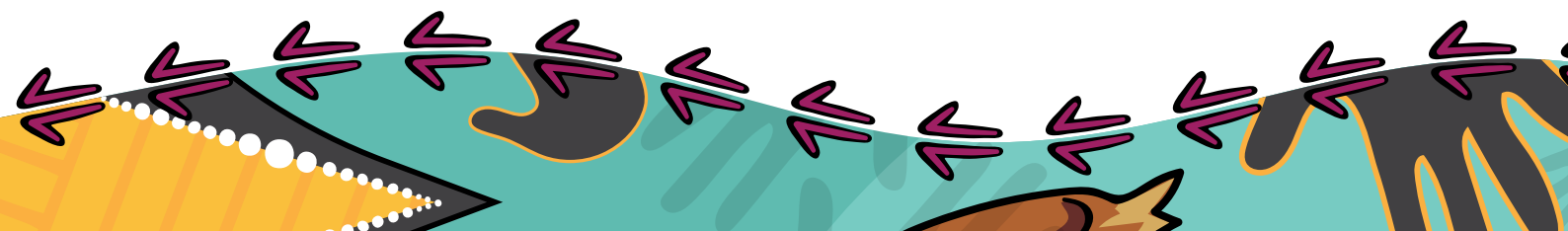
74
Students



68
Completed
Year 12



Geography: Mabuiag Island ILOC



Mer (Murray) Island

LANGUAGE SPOKEN

Yumplatok (Torres Strait Creole)

453

People

432

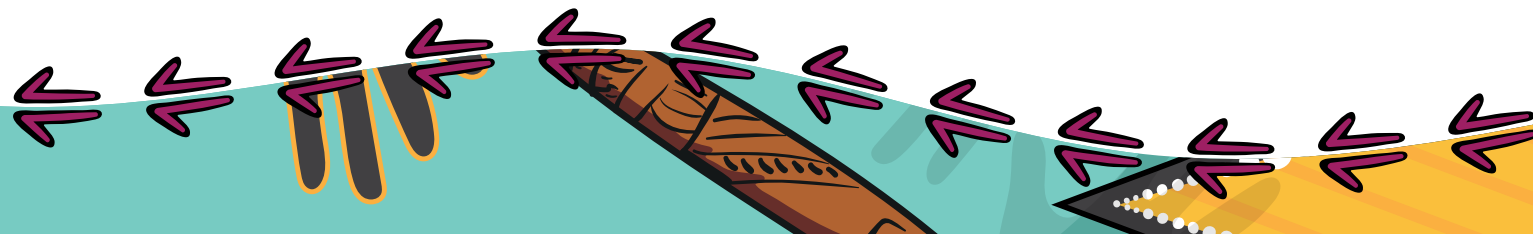
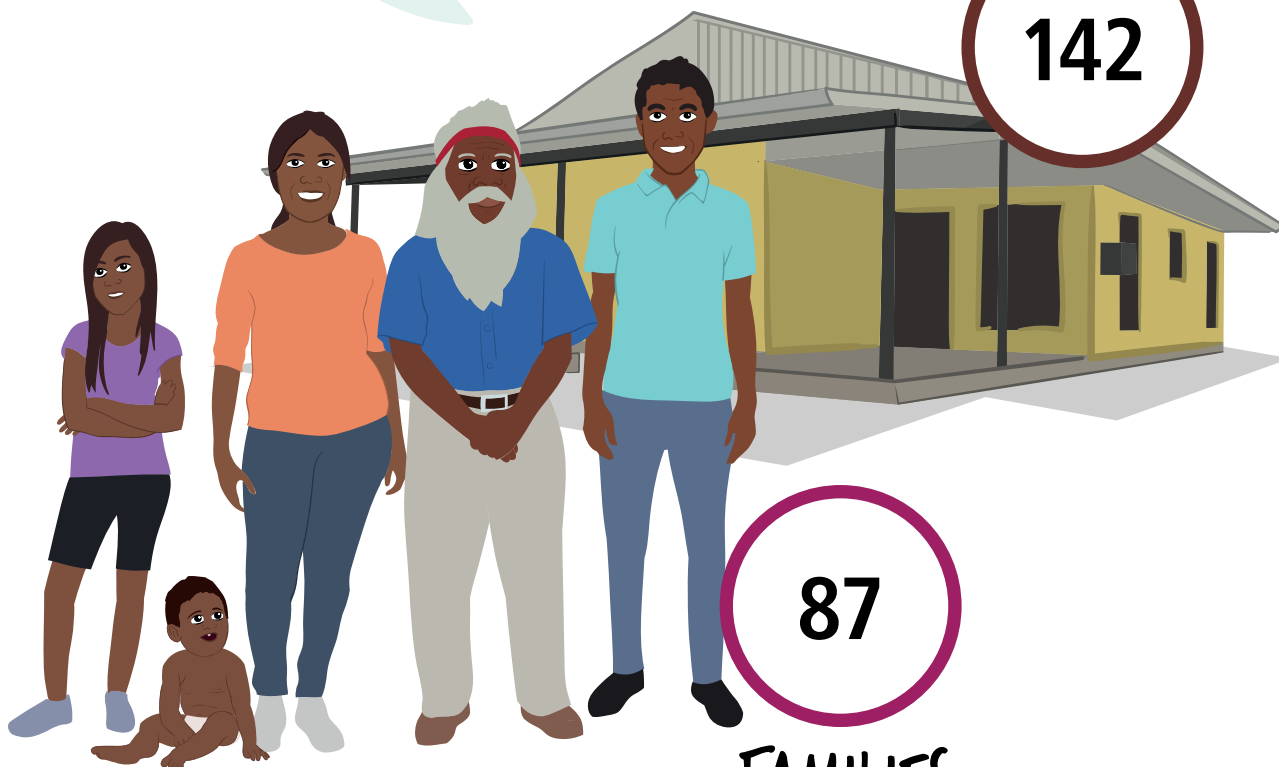
Aboriginal and/or
Torres Strait
Islander people

HOUSES

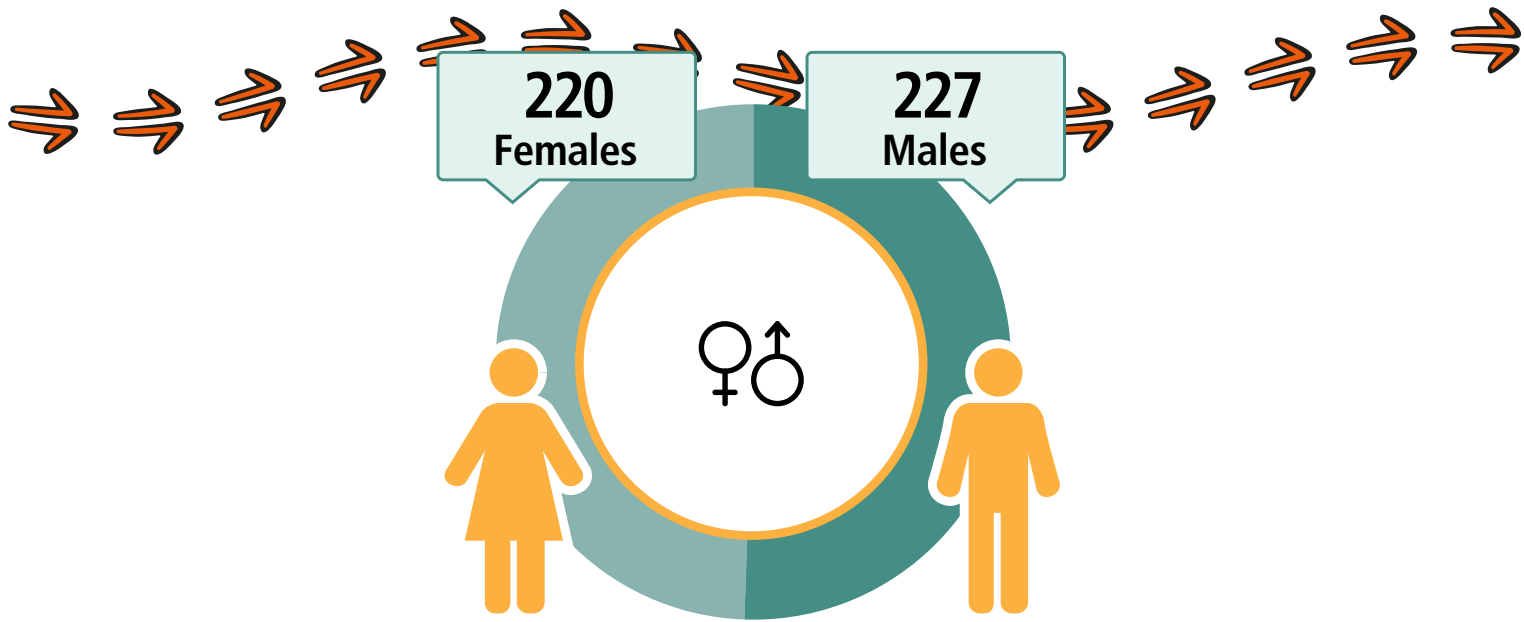
142

87

FAMILIES



Mer (Murray) Island



CARED FOR CHILDREN



27%

78
Working



\$323
Weekly Income



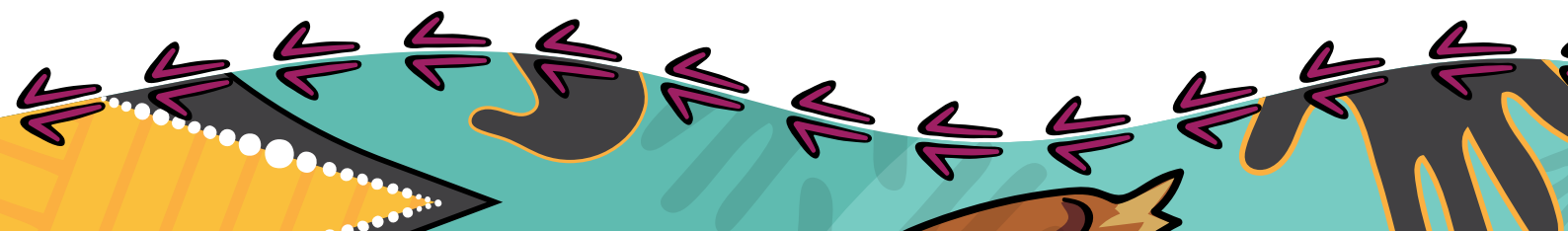
181
Students



83
Completed
Year 12



Geography: Mer (Murray) Island ILOC



Muralag and Inner Islands

LANGUAGE SPOKEN

Yumplatok (Torres Strait Creole)

114

People

83

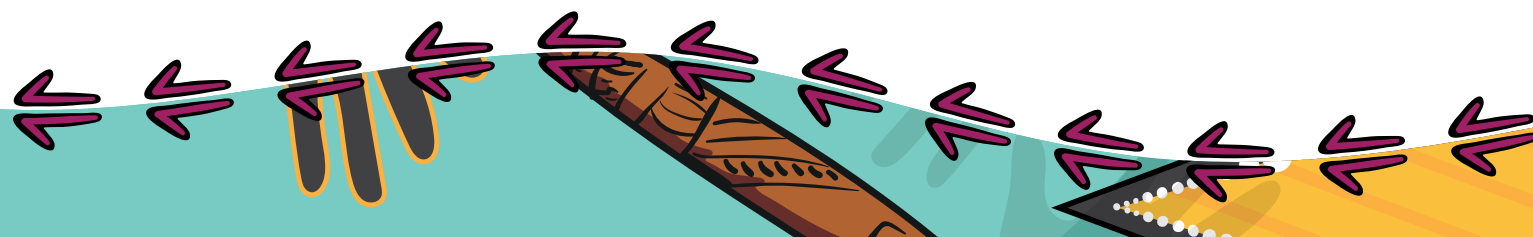
Aboriginal and/or
Torres Strait
Islander people

HOUSES

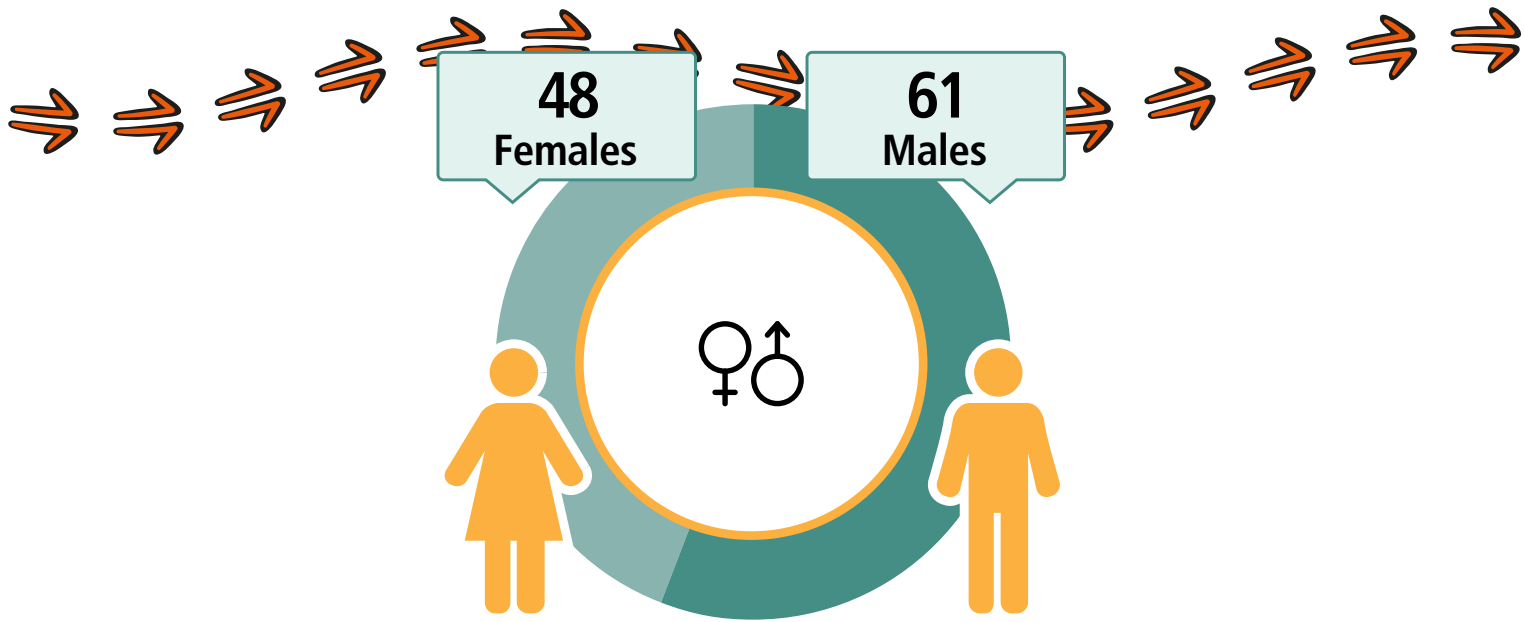
53

14

FAMILIES



Muralag and Inner Islands



CARED FOR CHILDREN



13%

23
Working



\$439
Weekly Income



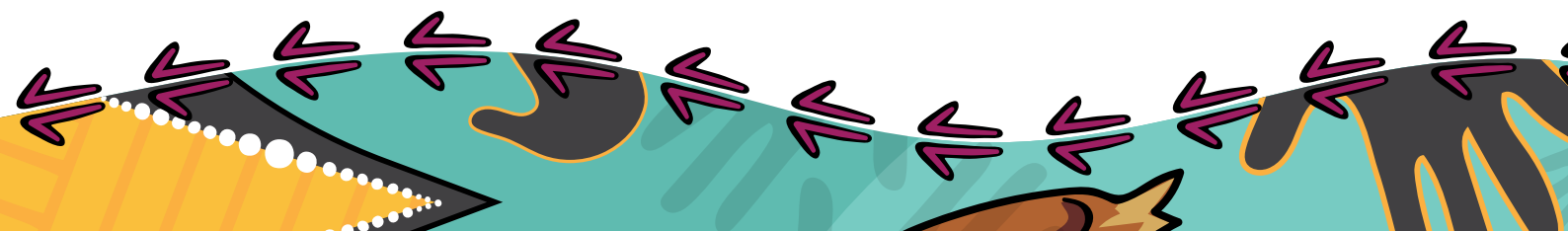
61
Students



22
Completed
Year 12



Geography: Muralag and Inner Islands ILOC



Poruma (Coconut) Island

LANGUAGE SPOKEN

Yumplatok (Torres Strait Creole)

167

People

161

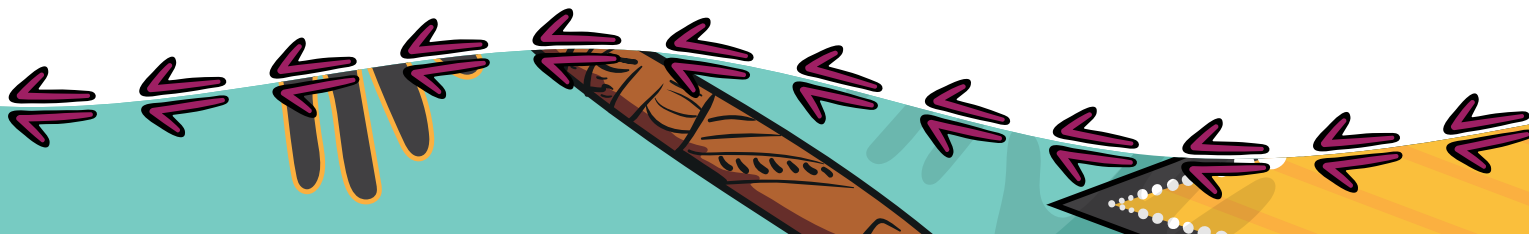
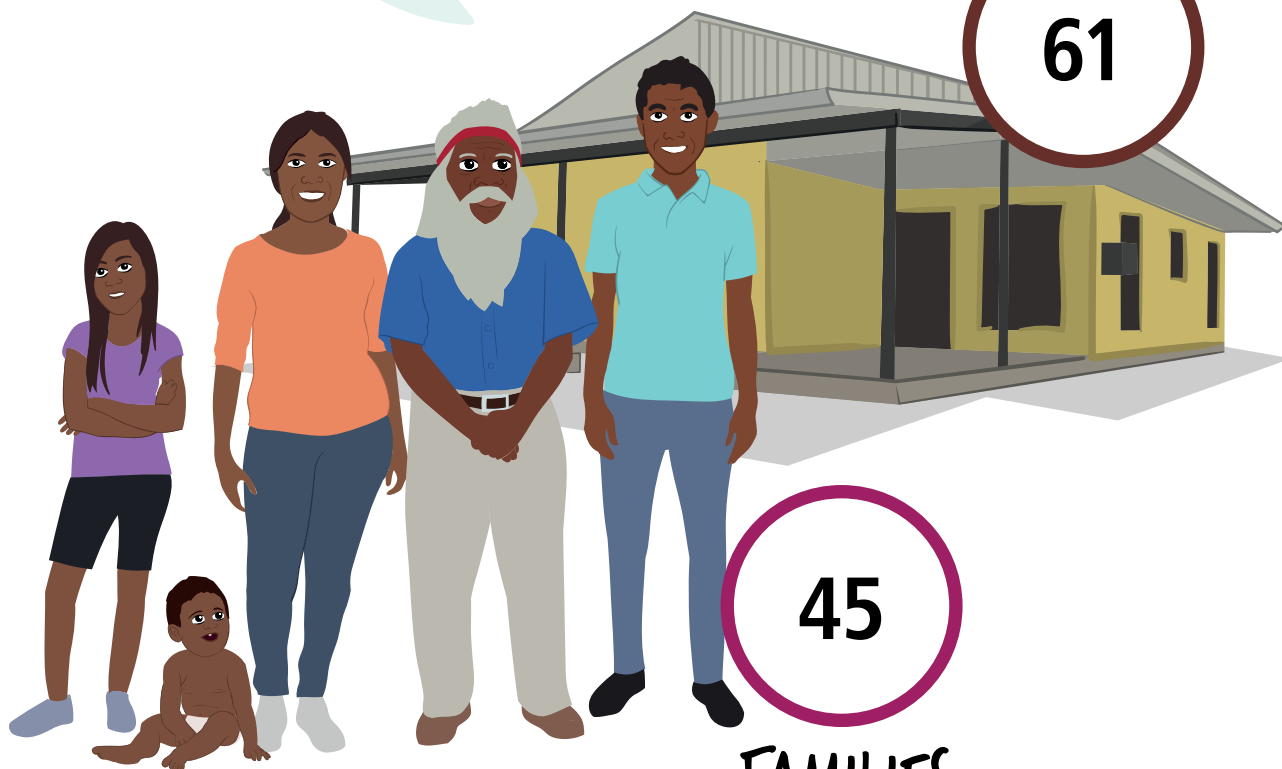
Aboriginal and/or
Torres Strait
Islander people

HOUSES

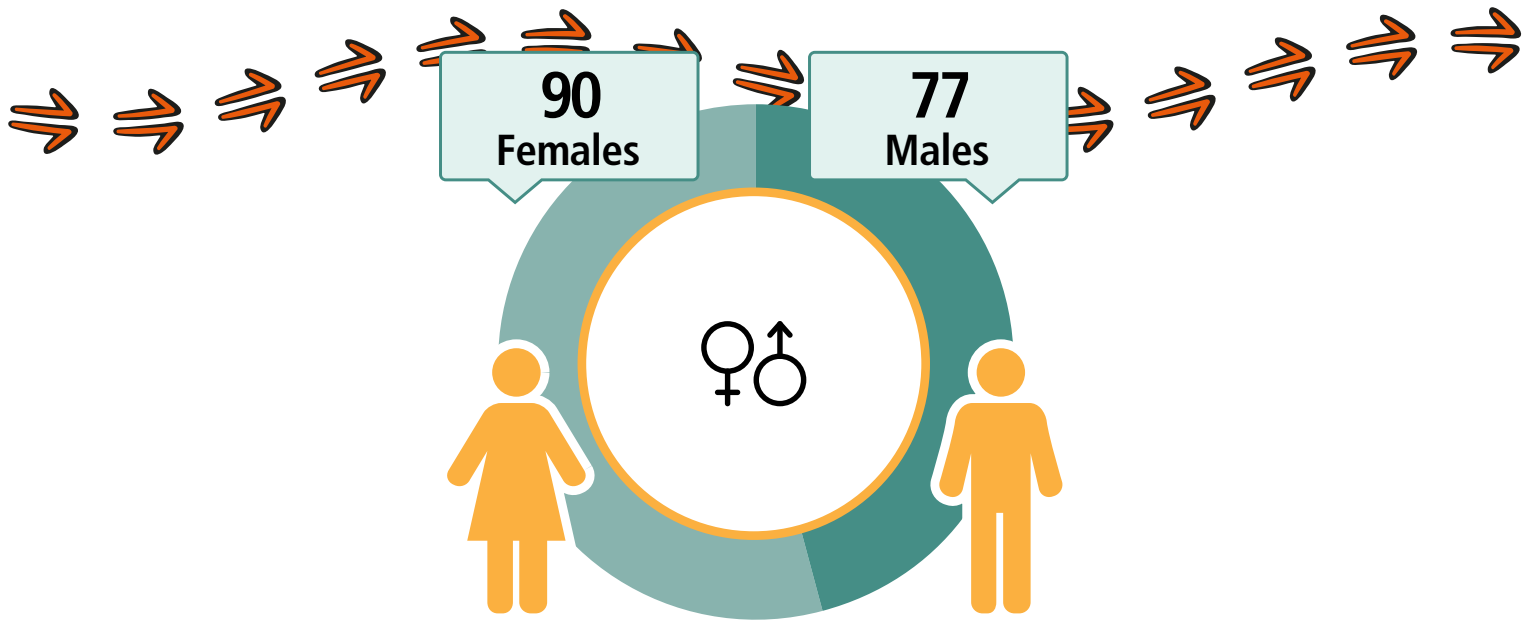
61

45

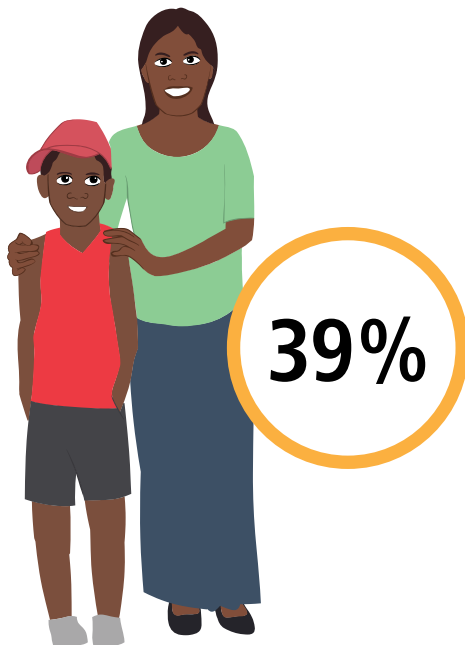
FAMILIES



Poruma (Coconut) Island



CARED FOR CHILDREN



57
Working



\$469
Weekly Income



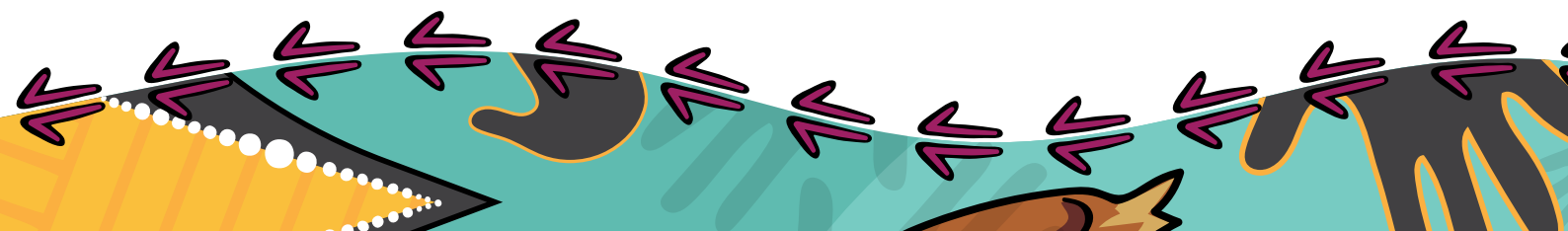
54
Students



66
Completed
Year 12



Geography: Poruma (Coconut) Island ILOC



Saibai Island

LANGUAGE SPOKEN

Kalaw Kawaw Ya/
Kalaw Ya

465

People

399

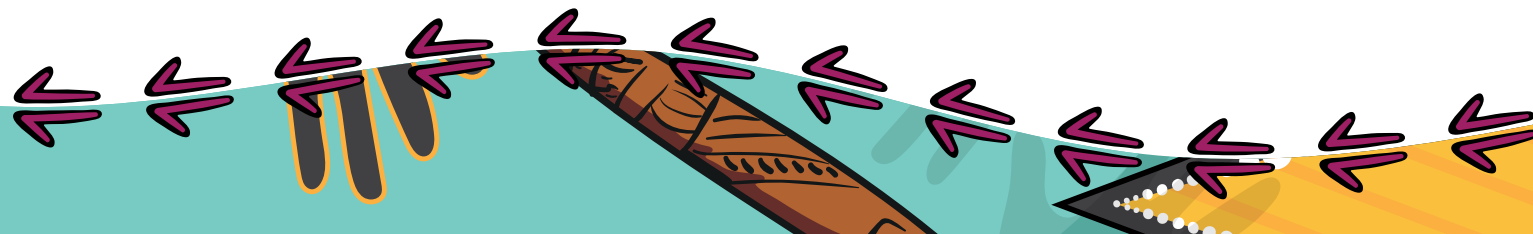
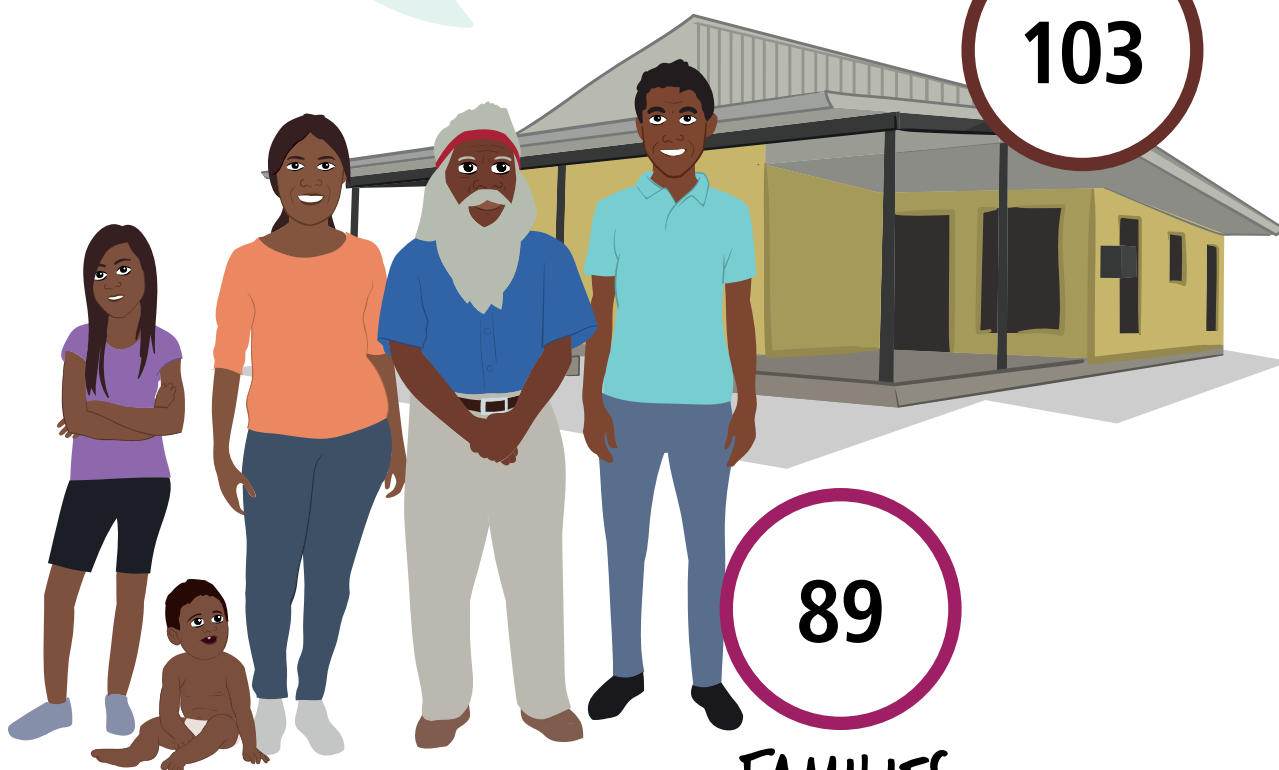
Aboriginal and/or
Torres Strait
Islander people

HOUSES

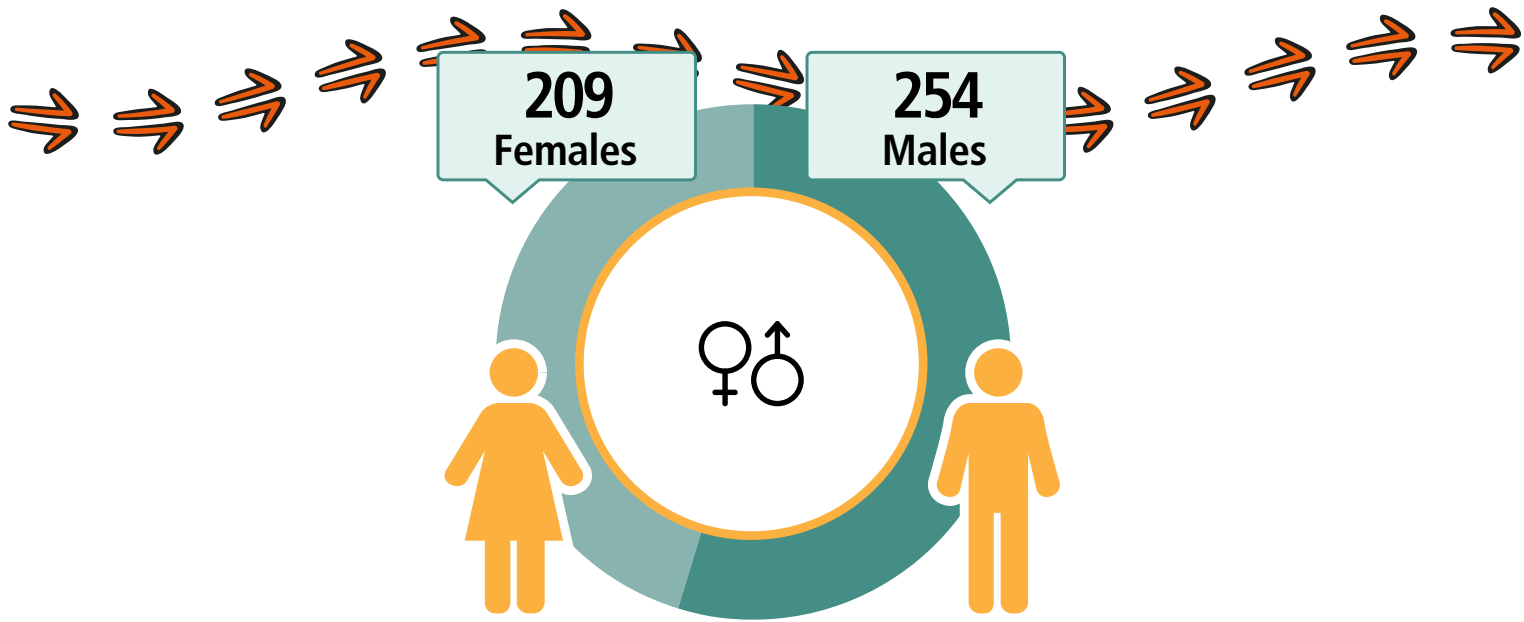
103

89

FAMILIES



Saibai Island



CARED FOR (CHILDREN



38%

51
Working



\$302
Weekly Income



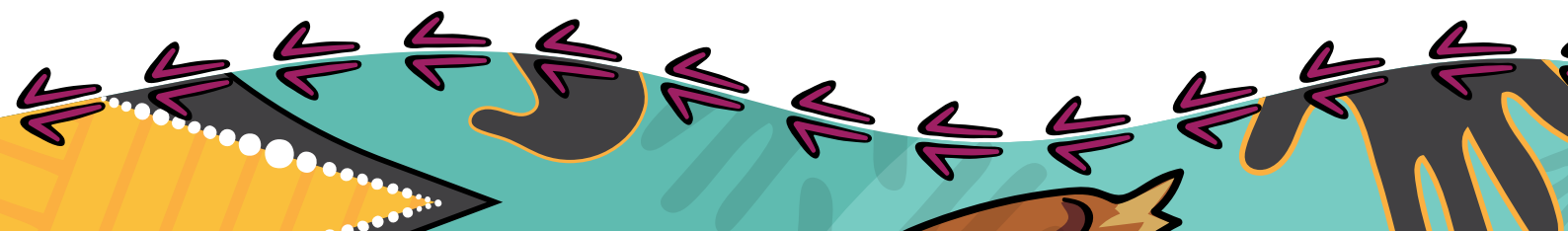
194
Students



115
Completed
Year 12



Geography: Saibai Island ILOC



St Pauls (Moa Island)

LANGUAGE SPOKEN
Yumplatok (Torres Strait Creole)

248

People

240

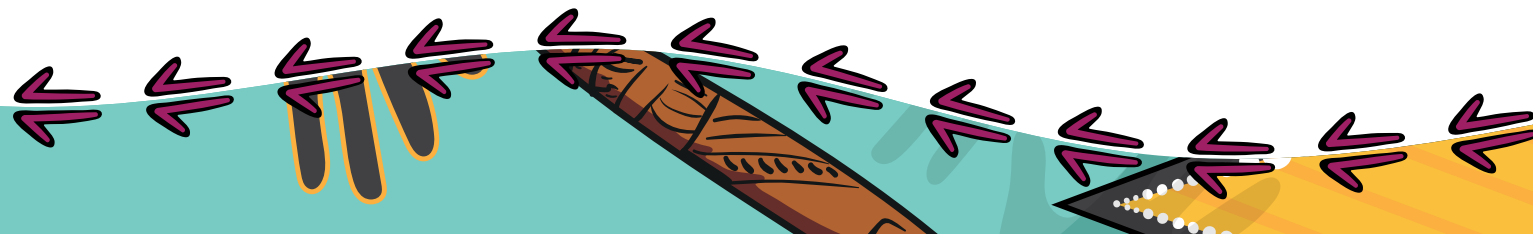
Aboriginal and/or
Torres Strait
Islander people

HOUSES

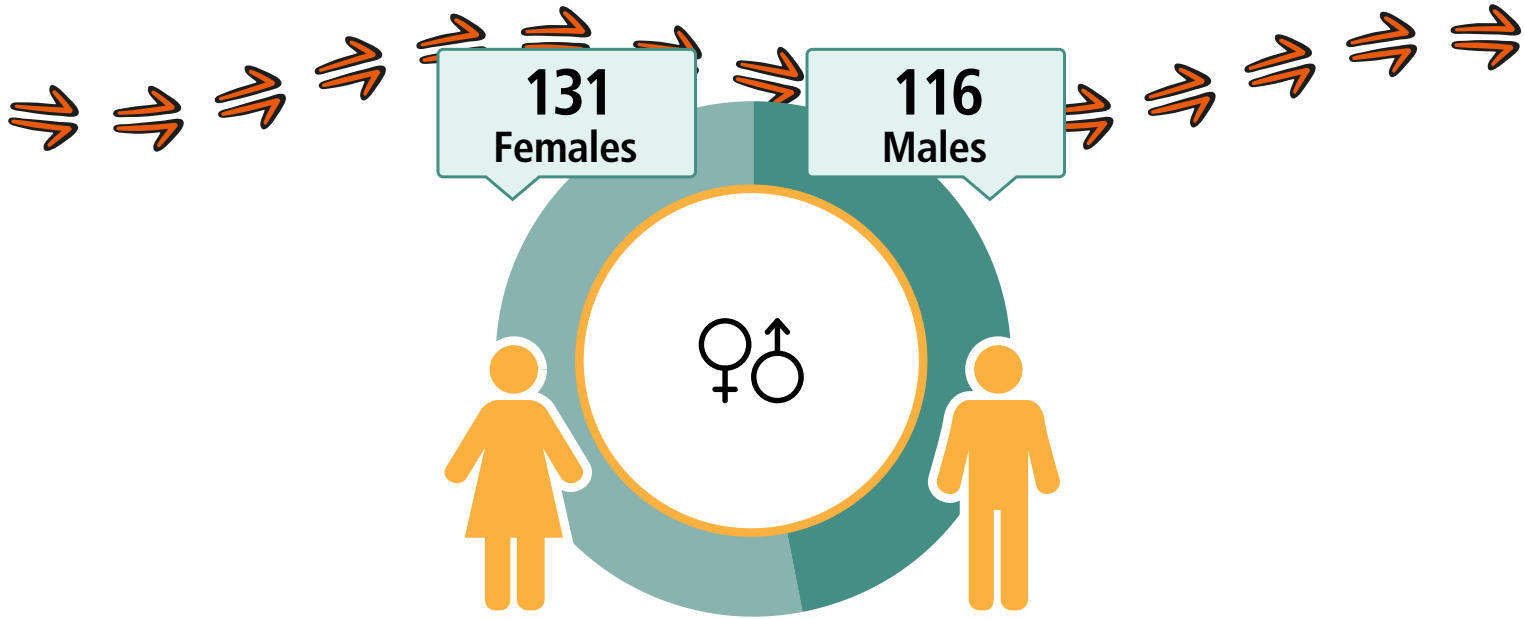
69

57

FAMILIES



St Pauls (Moa Island)



CARED FOR CHILDREN



42%

63
Working



\$428
Weekly Income



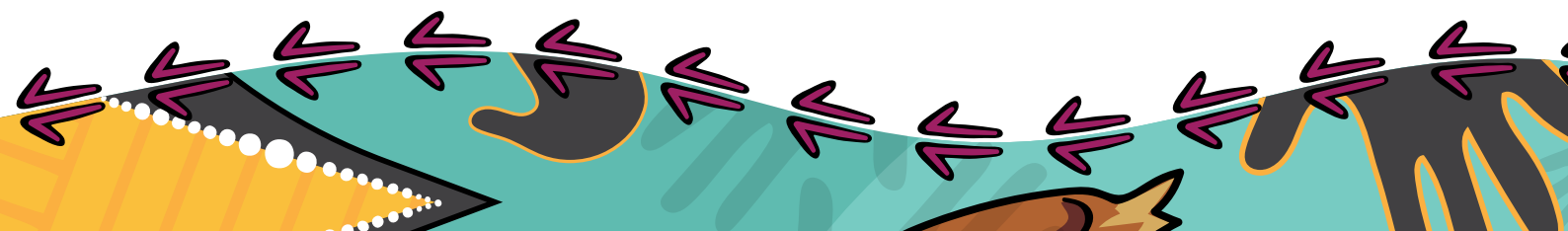
74
Students



75
Completed
Year 12



Geography: St Pauls (Moa Island) ILOC



Thursday Island - Port Kennedy

LANGUAGE SPOKEN

Yumplatok (Torres Strait Creole)

1 974

People

1 169

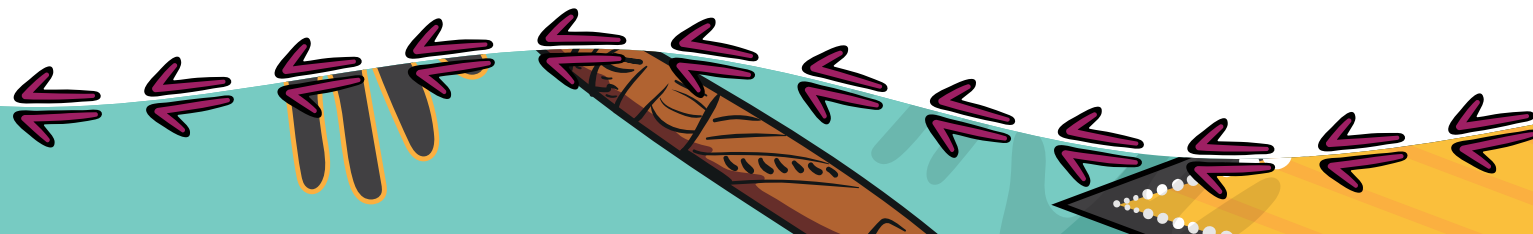
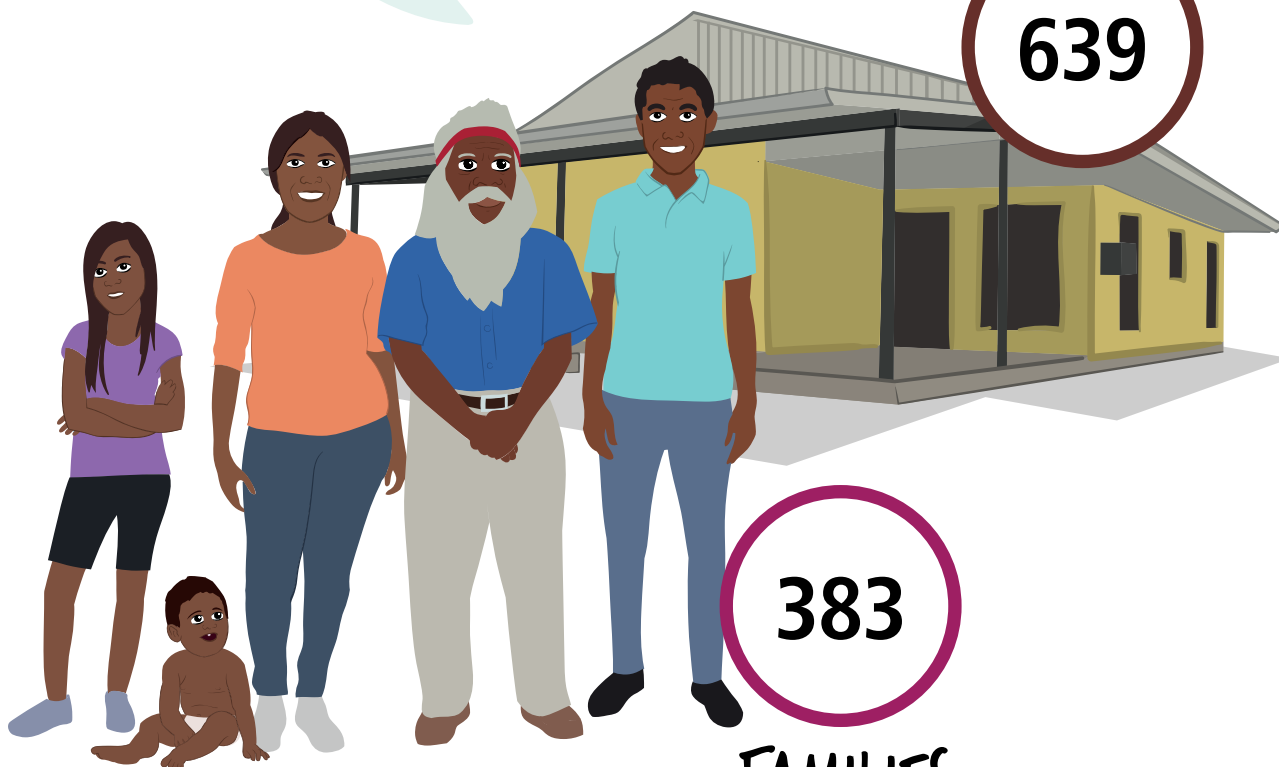
Aboriginal and/or
Torres Strait
Islander people

HOUSES

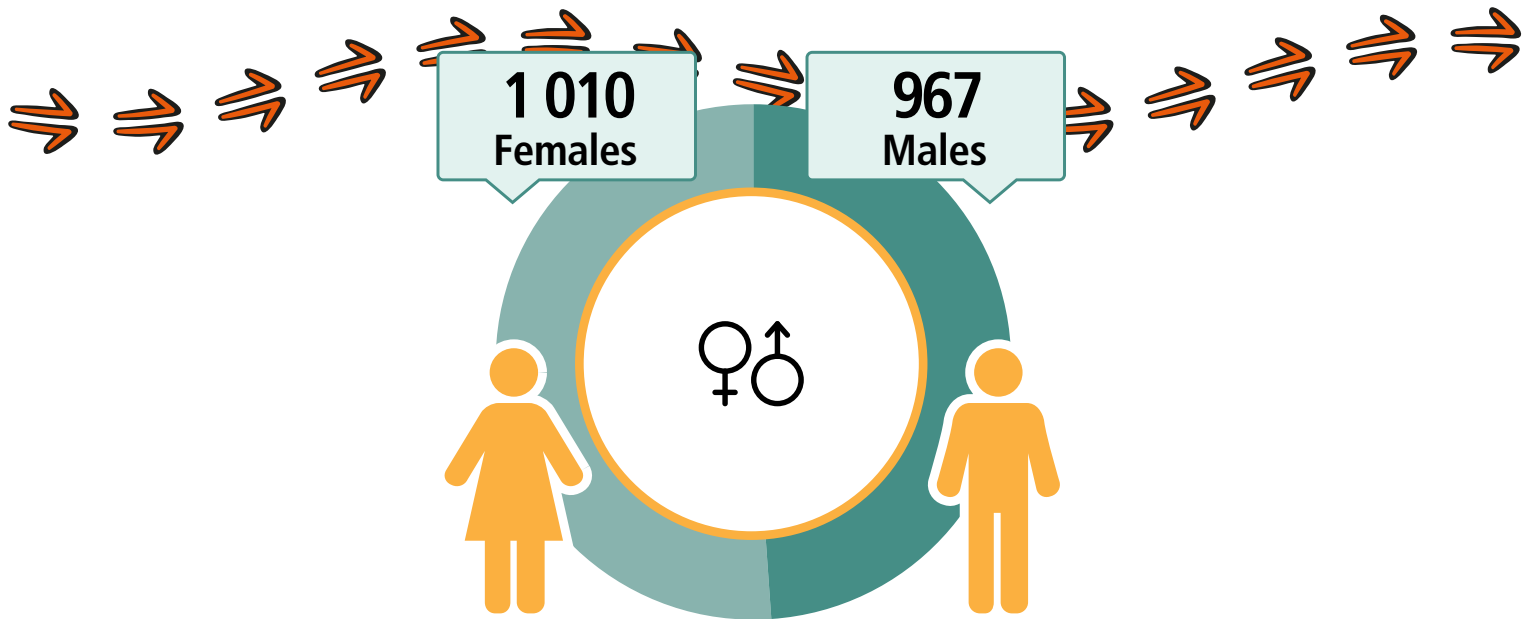
639

383

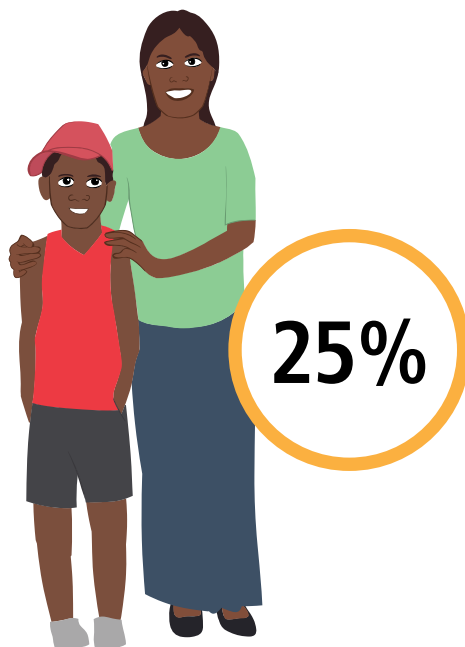
FAMILIES



Thursday Island - Port Kennedy



CARED FOR CHILDREN



843
Working



\$943
Weekly Income



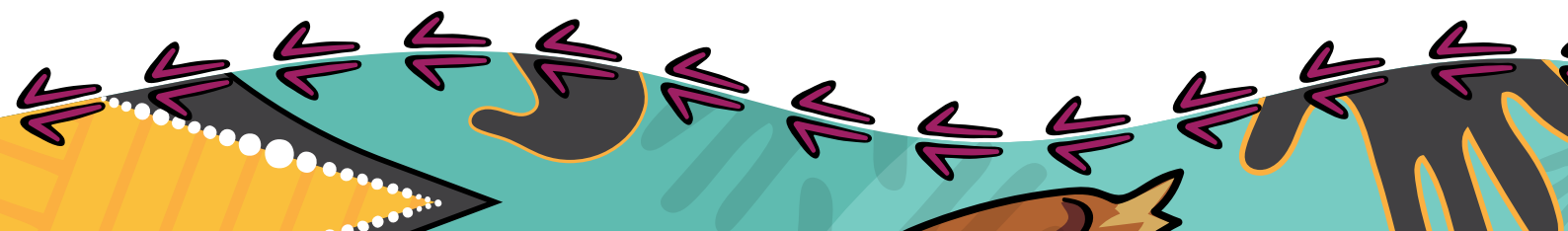
840
Students



687
Completed
Year 12



Geography: Port Kennedy (Thursday Island) ILOC



Thursday Island - TRAWQ



962

People

849

Aboriginal and/or
Torres Strait
Islander people

LANGUAGE SPOKEN

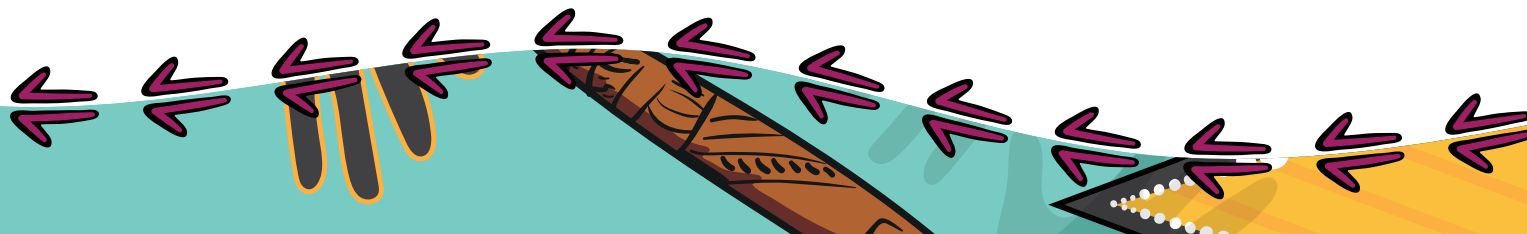
Yumplatok (Torres
Strait Creole)

HOUSES

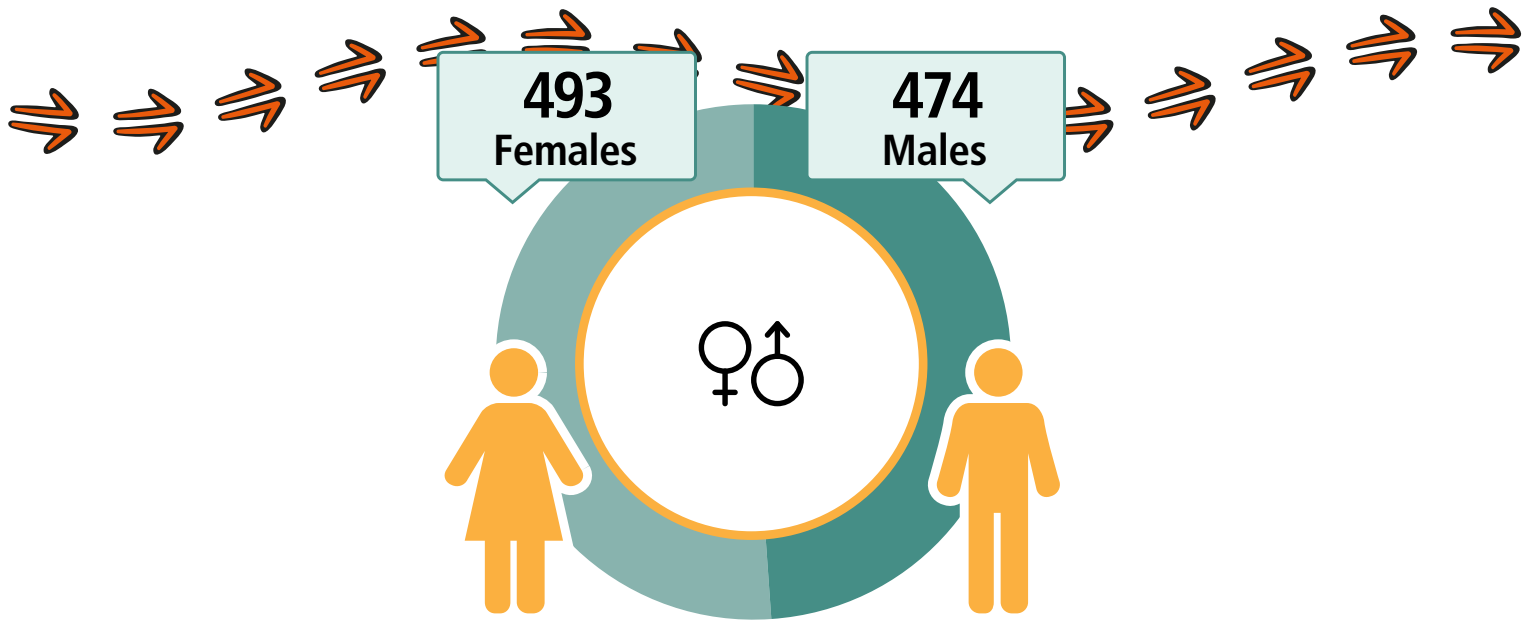
214

170

FAMILIES



Thursday Island - TRAWQ



CARED FOR (CHILDREN



29%

303
Working



\$528
Weekly Income



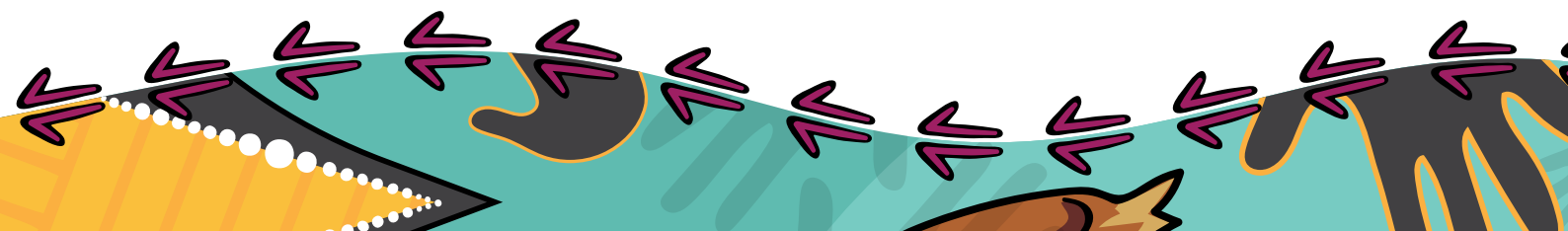
403
Students



288
Completed
Year 12



Geography: TRAWQ (Thursday Island) ILOC



Ugar (Stephens) Island

LANGUAGE SPOKEN
Yumplatok (Torres Strait Creole)

85

People

71

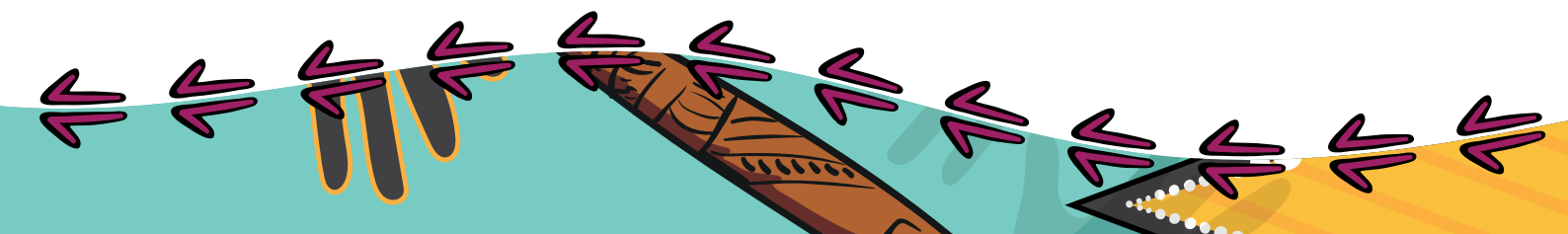
Aboriginal and/or
Torres Strait
Islander people

HOUSES

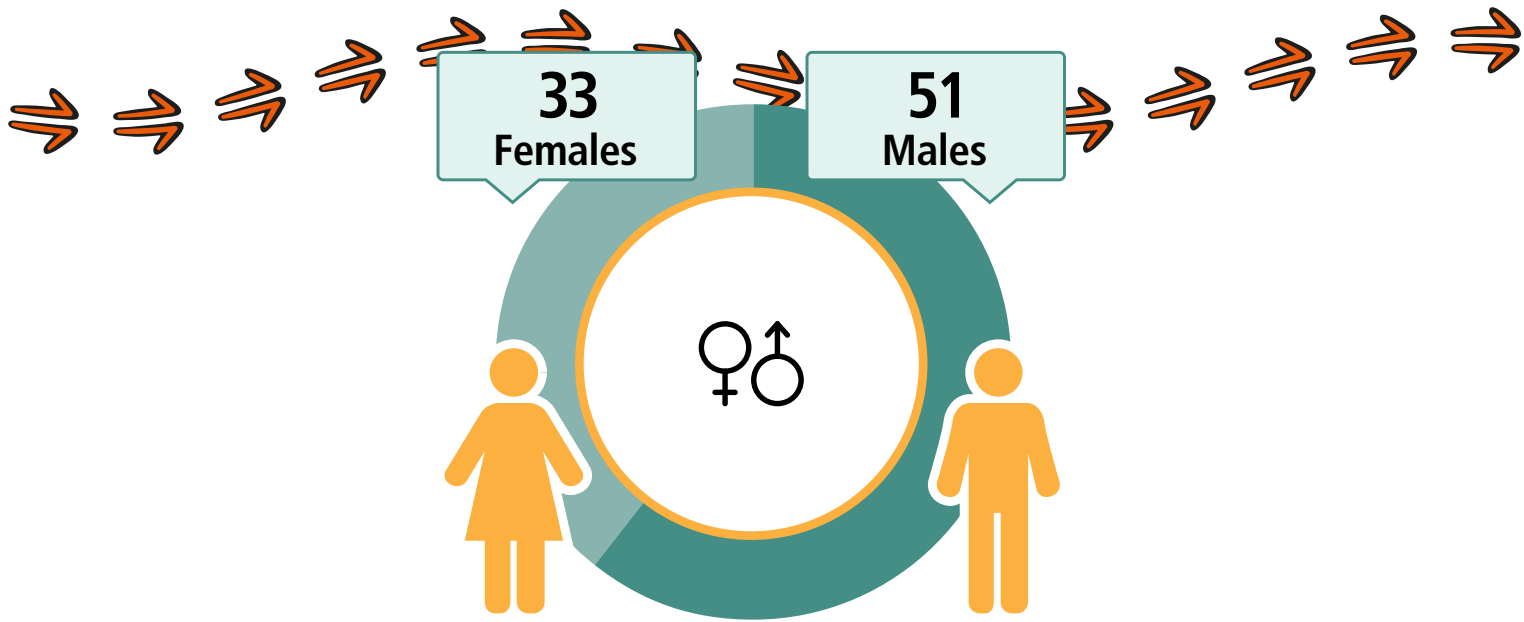
20

14

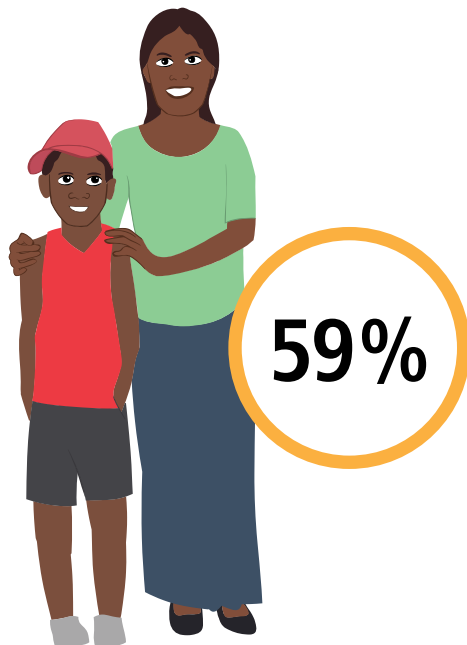
FAMILIES



Ugar (Stephens) Island



CARED FOR (CHILDREN



22
Working



\$374
Weekly Income



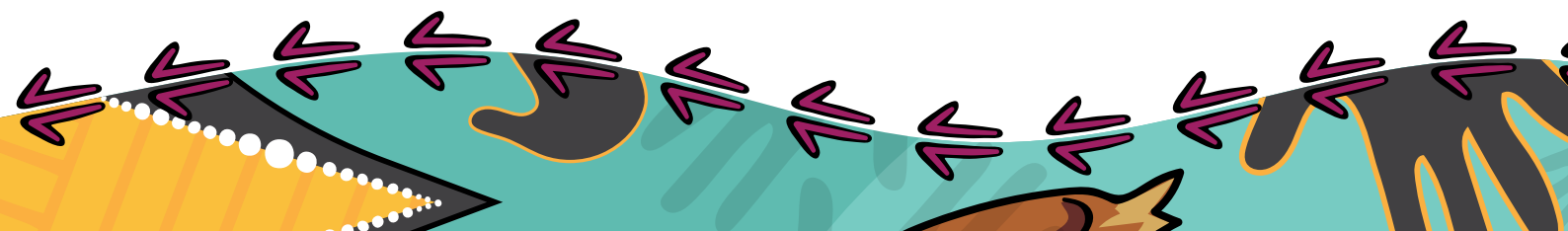
31
Students



21
Completed
Year 12



Geography: Ugar (Stephens) Island ILOC



Warraber Island

LANGUAGE SPOKEN

Yumplatok (Torres Strait Creole)

245

People

237

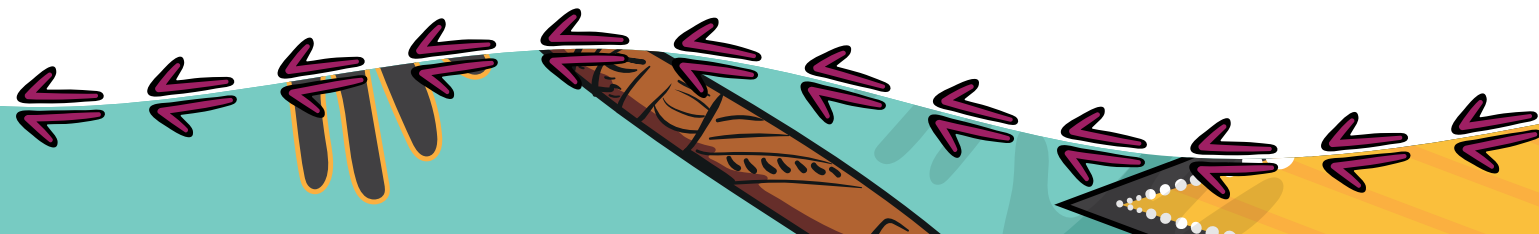
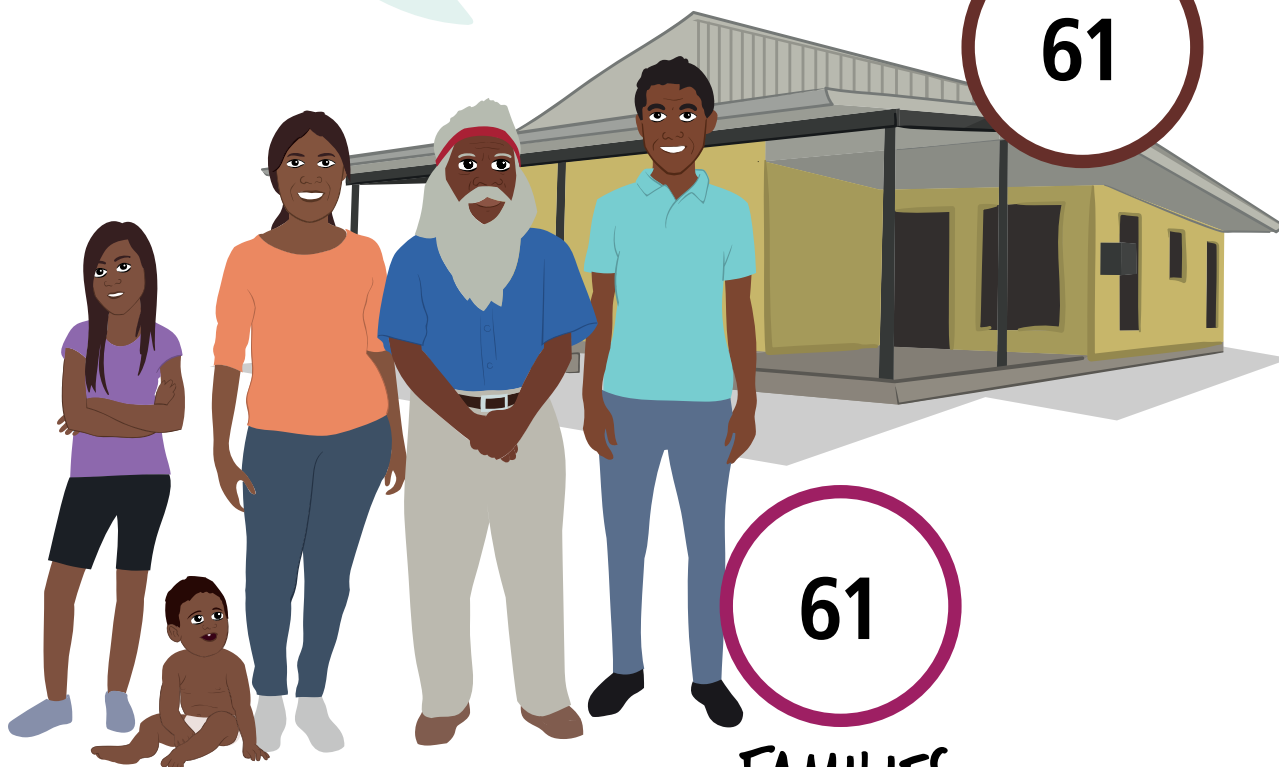
Aboriginal and/or
Torres Strait
Islander people

HOUSES

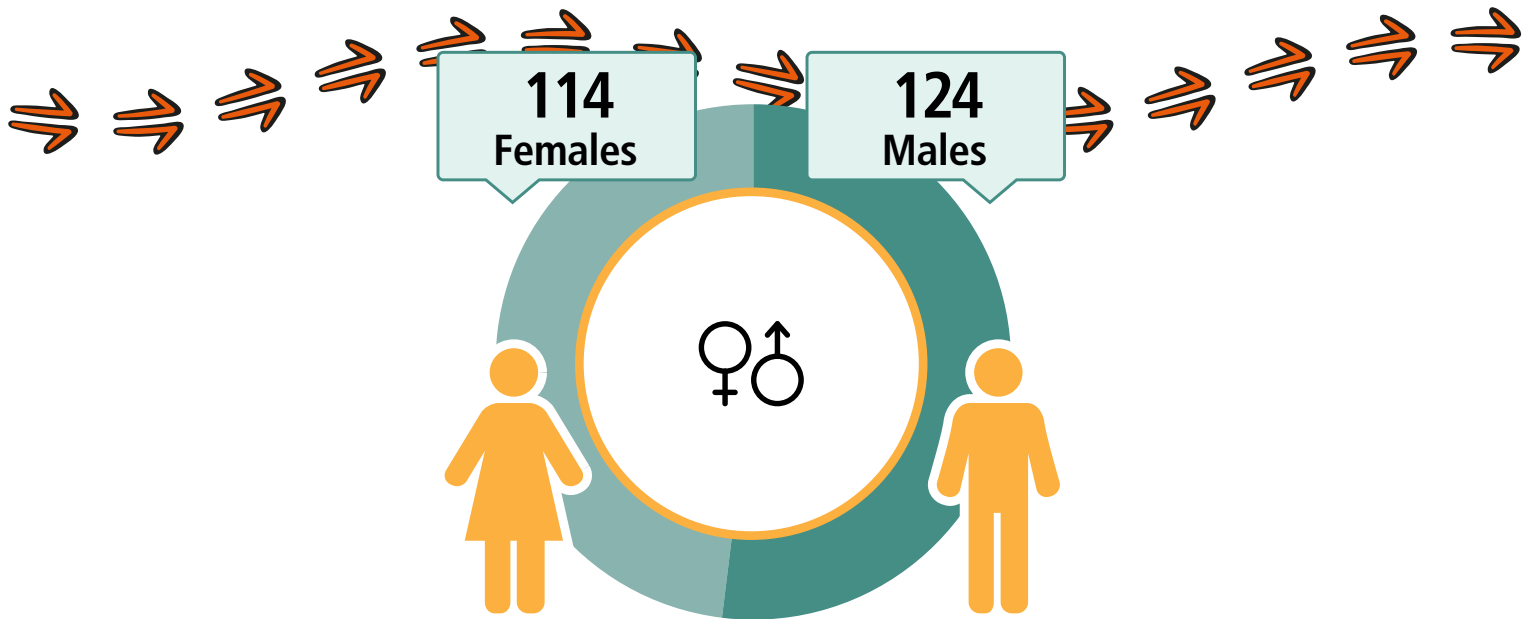
61

61

FAMILIES



Warraber Island



CARED FOR CHILDREN



47%

68
Working



\$321
Weekly Income



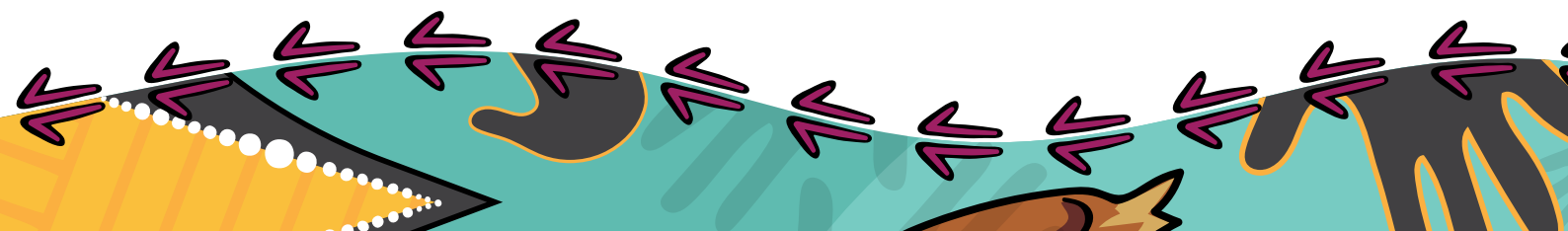
79
Students



85
Completed
Year 12



Geography: Warraber Island ILOC



Yorke Island

LANGUAGE SPOKEN

Yumplatok (Torres Strait Creole)

270

People

251

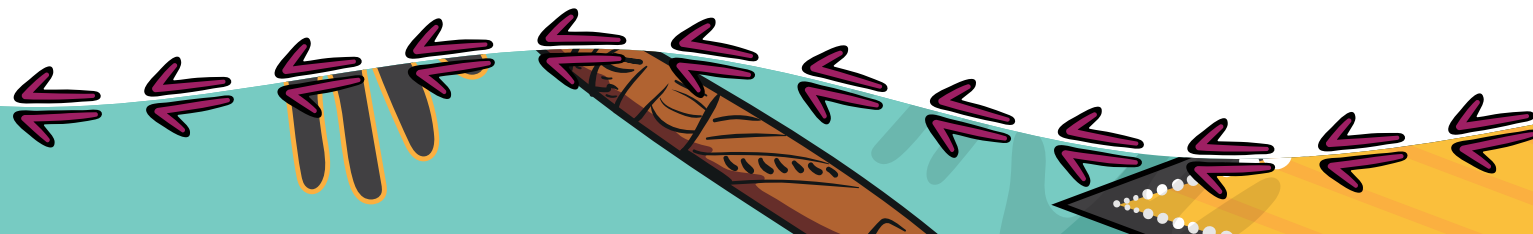
Aboriginal and/or
Torres Strait
Islander people

HOUSES

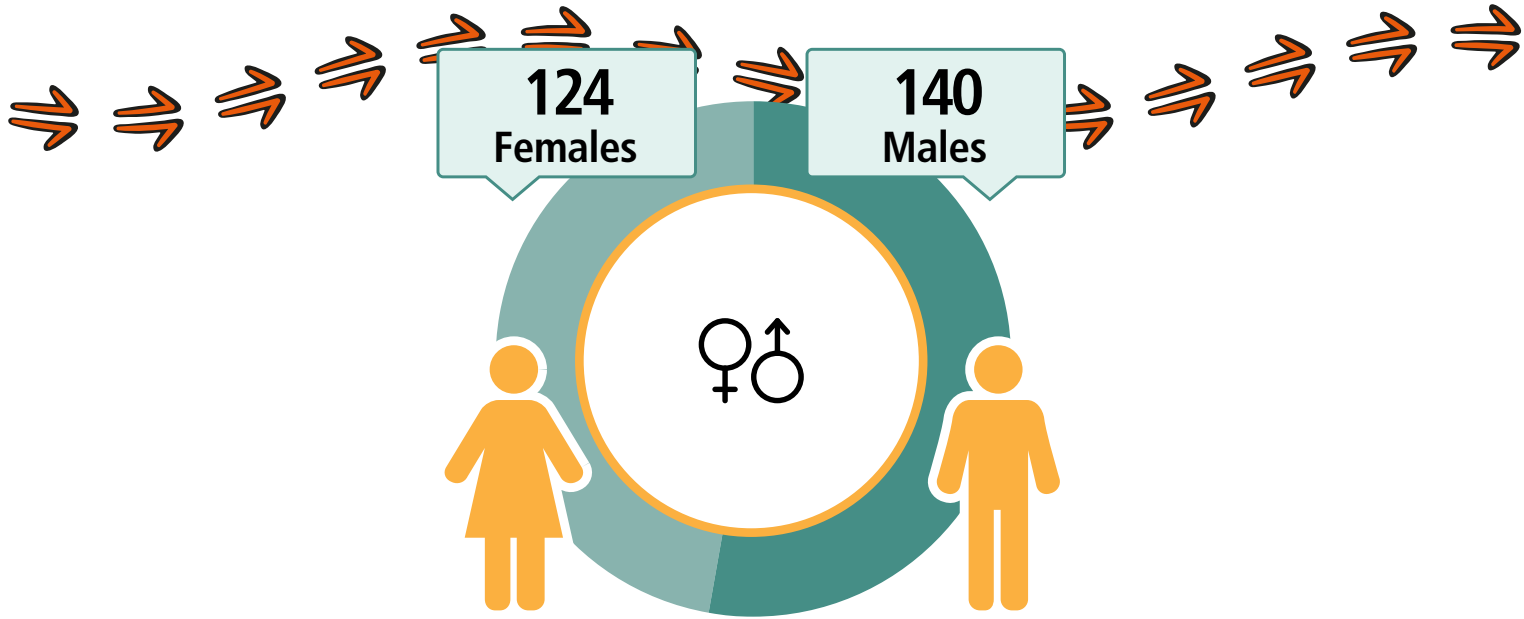
74

57

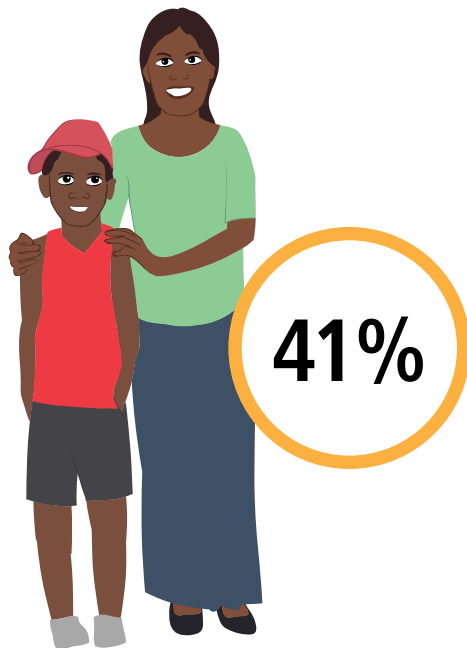
FAMILIES



Yorke Island



CARED FOR (CHILDREN



63
Working



\$320
Weekly Income



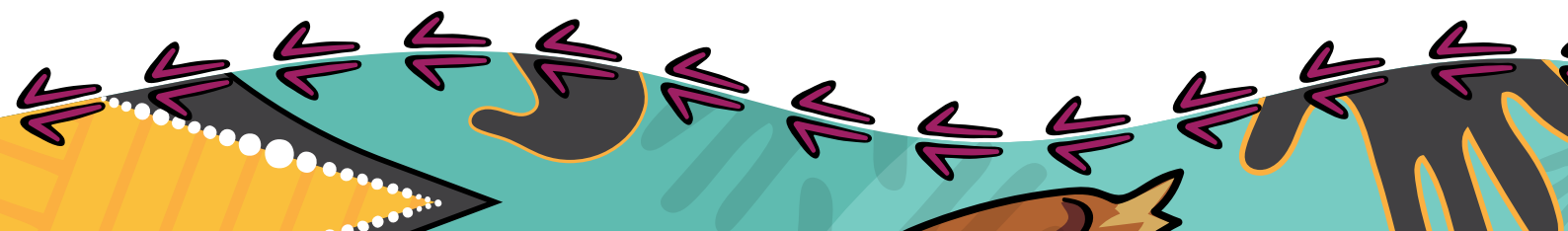
75
Students



81
Completed
Year 12



Geography: Yorke Island ILOC





Know more

You can find more information on your region for free at www.abs.gov.au/census using these data products.



Contact the Centre of Excellence for Aboriginal and Torres Strait Islander Statistics

Phone: 1300 135 070

Email: CoEATSIS@abs.gov.au

Disclaimer

The data displayed for the purposes of this publication may slightly differ to other Census products available on the ABS website.

All data in this publication is based on Total People, Total Dwellings and Total Families for each area.

Community names are generally based upon a commonly identified name or combination of names for the area/community. It is acknowledged that some communities may have an alternative name or different spelling.

Confidentiality

By law, your personal information is kept private and will not be shared with anyone. The ABS makes sure that no one can be identified by the information in this book.

